

# ZAXIS200



## HYDRAULIC EXCAVATOR

Model Code : ZX200-5A / ZX200LC-5A / ZX210H-5A / ZX210LCH-5A  
ZX210K-5A / ZX210LCK-5A

Engine Rated Power : 113 kW (152 HP)

Operating Weight : ZX200-5A : 19 700 kg	ZX200LC-5A : 20 200 kg
ZX210H-5A : 20 900 kg	ZX210LCH-5A : 21 400 kg
ZX210K-5A : 21 000 kg	ZX210LCK-5A : 21 500 kg

Backhoe Bucket : ISO Heaped : 0.51 - 1.20 m<sup>3</sup>



# ZAXIS Empower your Vision.

New ZAXIS provides reliable solutions: impressive fuel economy, swift front movements, and easy operation. You'll also find Hitachi technological prowess and expertise, such as the optimized hydraulic system and engine.

New ZAXIS features the key benefits of high quality, low fuel consumption, and high durability, all of which serve to ensure low running costs.

New ZAXIS, which is empowered by comprehensive evolution, will realize customers' visions and dreams, and pioneer your colorful future.



## More Production with Less Fuel

Page 4-5

- Achieving low fuel consumption and a large workload
- Powerful operation
- Easy-to-use attachments



## No Compromise on Operator Comfort

Page 8-9

- Comfortable operating environment
- Comfort-designed operator seat
- Robust cab
- New, easy-to-use multifunction monitor



## Hitachi Support Chain

Page 12-13

- Remote fleet management with Global e-Service
- Parts and service



## High Quality and Durability

Page 6-7

- New more reliable and durable engine
- Durable design
- Improved engine start-up performance in cold weather



## Simplified Maintenance

Page 10-11

- Dust-proof indoor net
- Grouped remote inspection points
- Bottom cover for fuel tank cleaning
- Low life cycle costs



## Various Versions

Page 14-15

- Heavy-duty version: H-series
- Demolition version : K-series



Note: The photos in this brochure show excavators with optional equipment.



## More Production with Less Fuel



### Achieving Low Fuel Consumption and a Large Workload

The HIOS III hydraulic system, which is an operator-friendly HIOS hydraulic system combined with efficient hydraulic control, was selected. It includes an hydraulic boosting system and an enhanced boom recirculation system to increase operating speed and reduce fuel consumption.

#### 14% Reduction in Fuel Consumption

New ZAXIS is a fuel-thrifty excavator that can reduce fuel consumption by 14%, compared to the conventional ZX200-3.

#### More Fuel Reduction in the ECO Mode

The ECO mode, a new economical mode, can further cut fuel consumption by 10% compared to the PWR mode.

#### Rapid Arm Roll-in

Arm roll-in speed increases by combined flow from arm and boom cylinders through regenerative valves for productive excavation.

#### Fast Arm Speed During Boom Lowering

Arm speed increases by boom weight during boom lowering, without needing pressure oil from a pump. That is, arm circuit flow is increased for higher arm speed, allowing for quick loading of a dump truck and positioning of the front.

### Powerful Operation

The Power Boost mode allows the operator to surge 10% more digging force for powerful excavation by pressing its button on the control lever. It can obtain the big digging force when the power is needed.

### Easy-to-Use Attachments

The operator can change over valves, adjust extra circuit flow, and check settings from the multifunctional monitor next to the operator seat. What's more, 11 types, including flow rate setting, can easily be selected by their identified names.





## High Quality and Durability



### Prestige R&D and Quality Control



Mid-sized excavator assembly line

Main frame welding line



Computer-Aided Engineering

Main pump testing area

Simulation testing from operator seat

Hitachi has earned praise for technological prowess and product performance around the world. R&D Division has a track record – including excellent design, stress analysis expertise using CAE system, and abundant production data base. What's more, a large-scale durability test field allows for a series of stringent testing of new machines. Production Division strives to automatize production processes, including robotic welding, machining, painting, assembling and transferring.

### New More Reliable and Durable Engine

The new engine, which is designed for use in harsh operating environment, is highly durable thanks to a fundamental review of the fuel and cooling systems. It also includes a new auto-idle stop mechanism to reduce fuel consumption and CO<sub>2</sub> emissions.

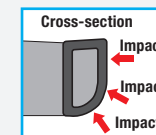


### Durable Design

Large size efficiency cooling system keeps engine cool, helps machine hard works. In addition, the expansion tank is adopted in the cooling system. So, the air in the coolant circuit can always be discharged and display the cooling performance of the machine fully.



The upperstructure frame is reinforced with the D-section skirt to increase rigidity against damage by obstacles.



D-section skirt

The X-beam frame is made monolithically with fewer welds for higher rigidity and durability.



X-beam frame

Front idlers and adjuster cylinders are integrated to increase durability. Idler brackets and travel motor brackets are both thickened for added durability.

The boom top and foot are reinforced with thickened high-tensile steel brackets, which incorporate steel bushings to enhance durability.

The arm-bucket joint is protected by WC thermal spraying on its contact surfaces to reduce wear and jolt. The HN bushings, utilized on joint pins, retain grease inside for longer greasing intervals.

### Improved Engine Start-up Performance in Cold Weather

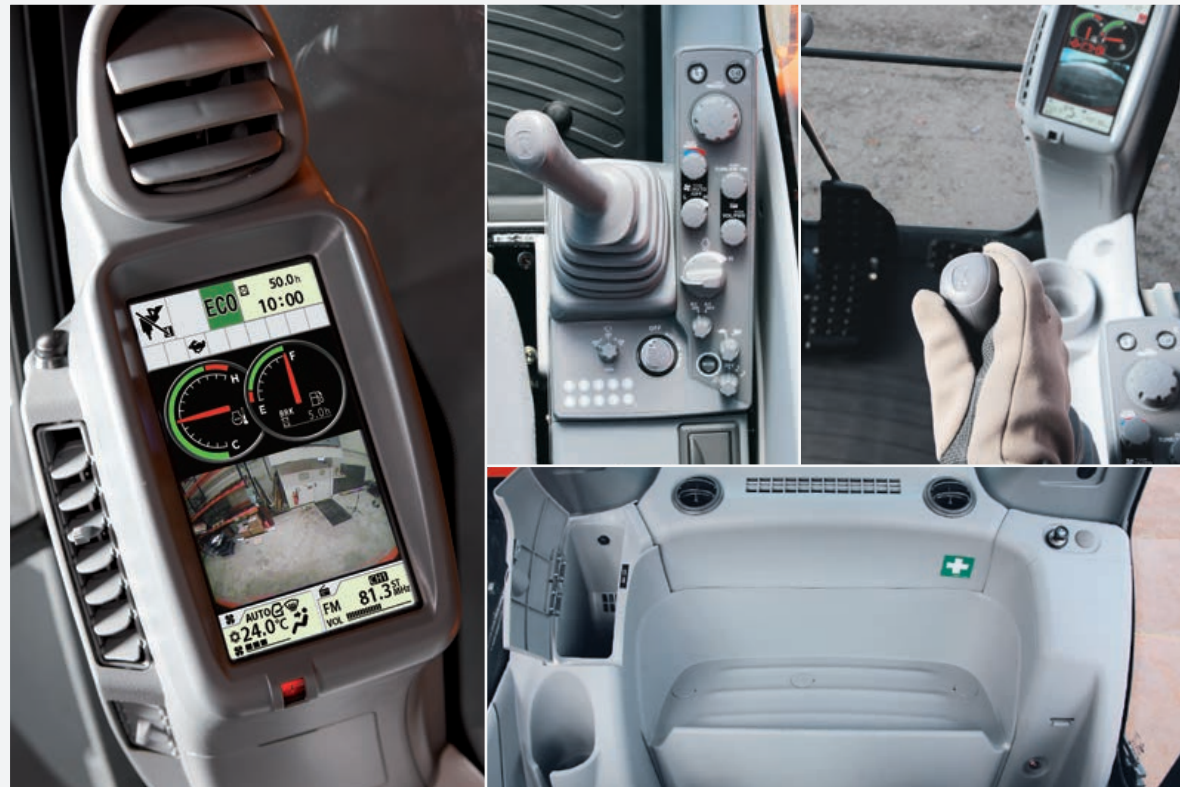
When the ambient temperature is low, waxing light oil components will clog the fuel pre-filter. The recirculation filter prevents this by recirculating hot fuel from the engine.



Recirculation filter



# No Compromise on Operator Comfort



## Comfortable Operating Environment

You'll feel comfortable and confident, with plenty of leg space and excellent visibility when operating in the cab. The new compact console gives more leg space. The new door pillar is shifted rearward by 70 mm to widen an entry space for easy access. A new LED room light, interlocked with the door, turns on when the door opens. The front window is easily removed and stored overhead using slide rails. The overhead window is openable for ventilation. Ample air conditioner vents are located strategically for uniform air circulation inside the cab. The control panel and control levers are arranged within easy reach of the operator. AM/FM radio and AUX port (optional) for a mobile music player are available for a long work day with less fatigue. All these designs focus on operator comfort.

## Comfort-Designed Operator Seat

The luxury cloth seat is fitted with a headrest and arm rests for operator comfort. The seat can be adjusted in multiple ways, sliding and reclining, to suit operator's size and preferences. The seat can slide rearward by 40 mm more for added leg space. An air suspension seat with a heat pad is optional.

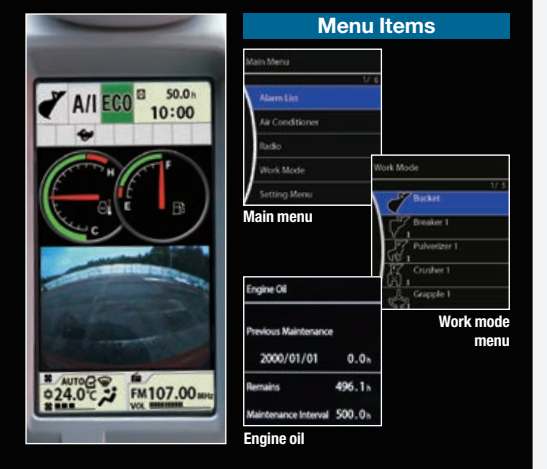
## Robust Cab

The robust cab, meeting the OPG (Top Guard Level 1), protects the operator from falling objects. The Roll-over Protective structure (ROPS) is designed to unlikely event of machine tipping or rolling over (Optional). The pilot control shut-off lever is provided with a neutral engine start system that permits engine starting only when the pilot control shut-off lever is in Lock position.



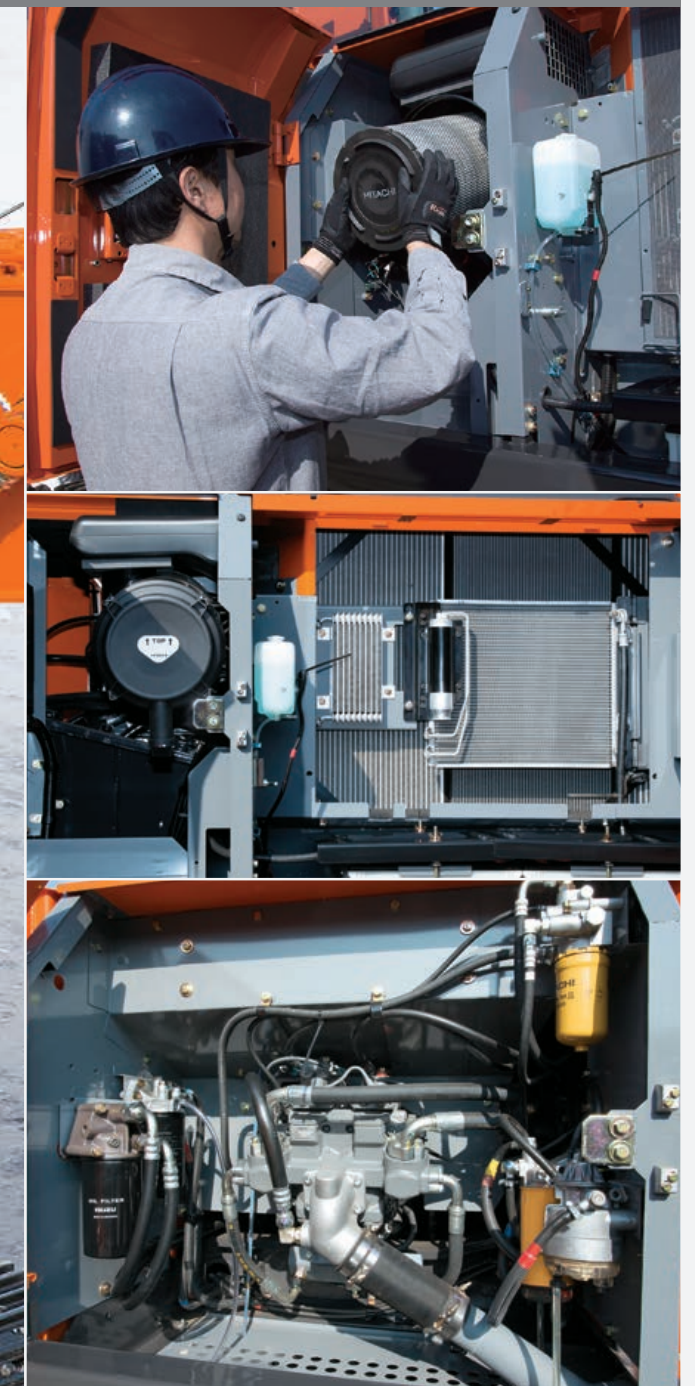
## New, Easy-to-Use Multifunction Monitor

The new multi-language, multifunction monitoring system comprises a 7-inch high-resolution color monitor and a multifunction controller. The monitor allows the operator to check varying operating variables: hydraulic oil temperature, fuel level, work mode, full-auto air conditioner, AM/FM radio, rear view monitor camera, maintenance support, and attachment flow adjustment. Menu items can be selected and adjusted by a multifunction controller on the control panel. A new rear view monitor camera always displays the view behind the machine.





## Simplified Maintenance



### Dust-Proof Indoor Net

A dust-proof indoor net, provided at the front of radiator, can be easily removed and cleaned with compressed air. At the rear of the radiator, air blowing can be done through a one-touch open cover. The air condenser is openable for easy cleaning at its rear.



### Grouped Remote Inspection Points

Service points are concentrated inside left and right covers that are readily accessible from ground level for convenient servicing and inspection, including water draining from the fuel tank, and replacement of filters.

### Bottom Cover for Fuel Tank Cleaning

The fuel tank is equipped with a bottom cover, allowing for easy cleaning of the inside of the tank.

### Low Life Cycle Costs

Service intervals are long enough to slash maintenance costs.

Engine Oil Filter : 500 h  
Hydraulic Oil Filter : 1 000 h  
Fuel Filter : 1 000 h  
Fuel Pre-Filter : 1 000 h

Engine Oil : 500 h  
Hydraulic Oil : 5 000 h



Lubricant  
Consumables



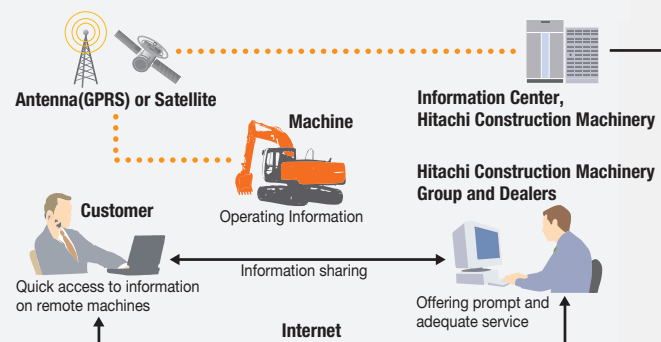
## Hitachi Support Chain

Hitachi Support Chain is a full customer support system offered after buying a Hitachi machine.

### Remote Fleet Management with Global e-Service

#### Easy Access to On-Site Machines through the Internet

This on-line fleet management system allows you to access each on-site machine from a PC in your office. You can get its operating information and location to increase productivity of the fleet and reduce downtime. Operating data and log are sent to a Hitachi server for processing, and then to customer and dealers around the world. This system is available 24 hours a day, all the year around.



Note: In Some Regions, Global e-Service Is Not Available by Local Regulations.

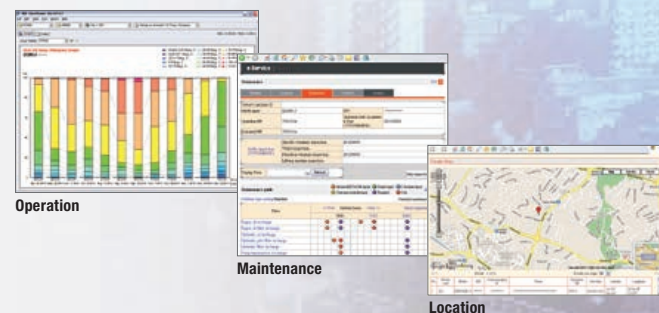
#### Main Features of Global e-Service

##### Functions

Global e-Service provides easy access to a machine on site, conveying operating information and log, including daily operating hours, fuel level, temperatures, pressures, and likes.

##### Maintenance

Maintenance data and log are displayed on a easy-to-read monitor screen, suggesting recommended maintenance for efficient fleet management.



### Parts and Service

Hitachi full customer support is available every area on the globe for full customer satisfaction through Hitachi local dealers.

#### Parts

Hitachi Global Online Network, a parts supply system, is linked with Japan Parts Center, overseas depots and over 150 dealers abroad to deliver on-line parts information, including in-stock parts, order receptions, shipments and delivery period of over one million parts and components.

##### Genuine Hitachi Parts

Genuine Hitachi parts, meeting Hitachi stringent quality standards, are guaranteed according to Hitachi warranty standards. The use of genuine Hitachi parts, including engine, fuel, hydraulic oil and filters, may slash running costs, and extend machine life.

##### Ground Engaging Tools (GETs)

Hitachi provides an array of Hitachi Ground Engaging Tools developed and built for a variety of applications. Using high-

quality, well-maintained GETs will help you get customers' trust.

Note: Some dealers do not handle Hitachi GETs.

##### Remanufactured Components

Hitachi components are remanufactured according to the stringent remanufacturing standards at factories around the world. They have high quality equivalent to new ones, and backed up by Hitachi warranty system.

Note: Some dealers do not handle Hitachi Remanufactured Components.

#### Service

##### Extended Warranty — HELP

Hitachi Standard Warranty System is available on all new Hitachi machines. In addition, Hitachi offers Hitachi Extended Life Programs (HELPS) to suit customer expectations –

protecting machines under tough operating conditions, avoiding unexpected downtime, and reducing repair costs.

Note: Warranty conditions vary by equipment.

##### Diagnostic Tools — Maintenance Pro

Electronic control system needs quick on-site solutions, apart from mechanical repairs. Hitachi's Maintenance Pro can diagnose machine failures in a short time by plugging a PC into a failed machine.

##### Technical Training

On-site servicing matters despite locations to keep the machine at peak performance and reduce downtime. Technical Training Center (TTC), located in Japan, educates and trains service technicians and service support personnel coming from Hitachi dealers and factories on the globe according to the international training programs.



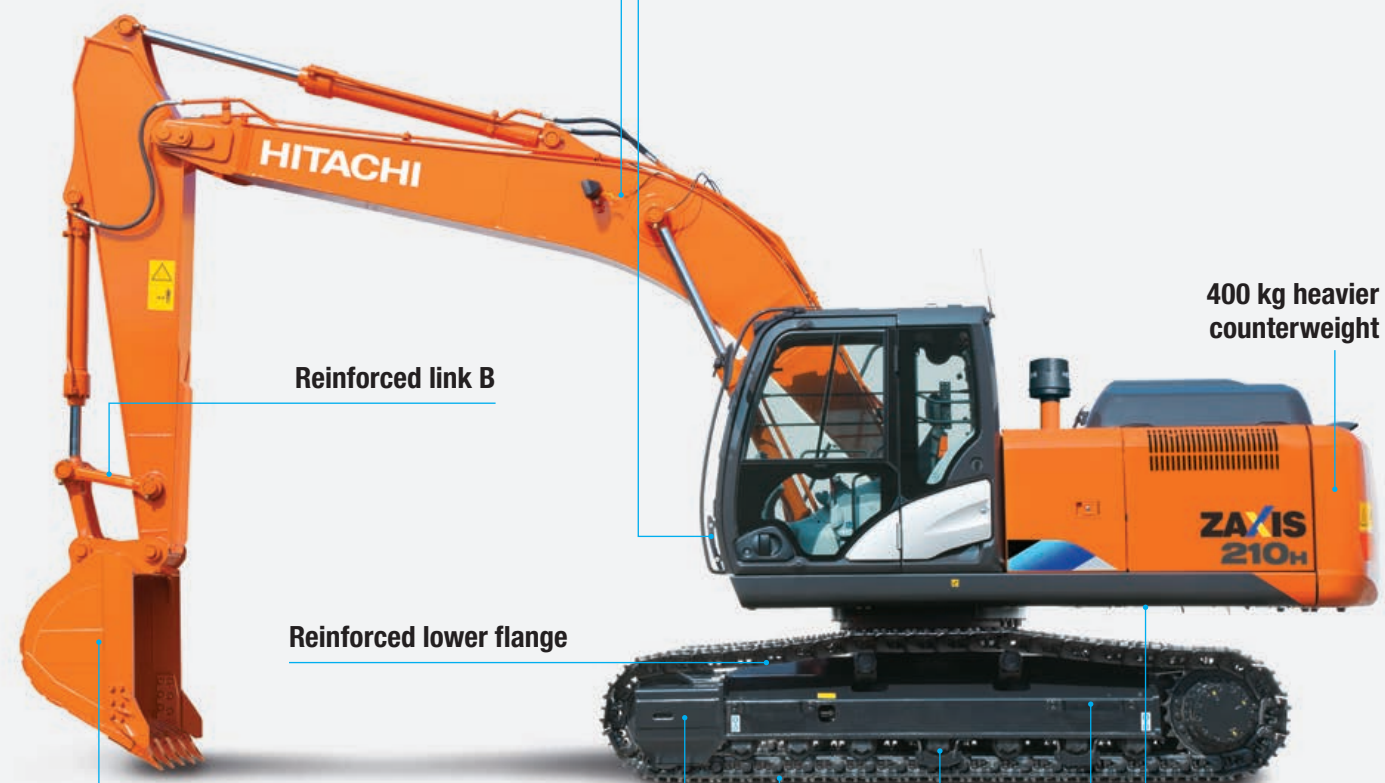
# Various Versions

## Heavy-Duty Version: H-Series ZAXIS 210H

### Reinforced front attachment (H-boom / H-arm)

Thickened steel plates, damage prevention plates and square bars

### Lower cab front guard



Reinforced link B

Reinforced lower flange

Reinforced idler bracket

Reinforced triple grouser shoes  
600 mm

400 kg heavier  
counterweight

Reinforced  
undercover  
6.0 mm

Reinforced side step  
(bolted)

Reinforced track guards  
(2 on each side)

**H-bucket 0.80 m<sup>3</sup>**  
Additional lateral-type  
wear plates, and additional  
reinforcement plates at  
cutting edges, bottom

## Demolition Version: K-Series ZAXIS 210K

### Reinforced front attachment (K-arm)

Thickened steel plates, and  
damage prevention plates

### Twin wipers

High-performance full-  
flow filters with restriction  
indicators

Breaker and crusher  
piping

Attachment  
basic piping

Reinforced link B  
for demolition

Reinforced lower  
flange

Reinforced track  
undercover 9.0 mm

Reinforced triple grouser  
shoes 600 mm

Reinforced bucket  
0.80 m<sup>3</sup>

### K-cab (Cab with overhead window & guard)

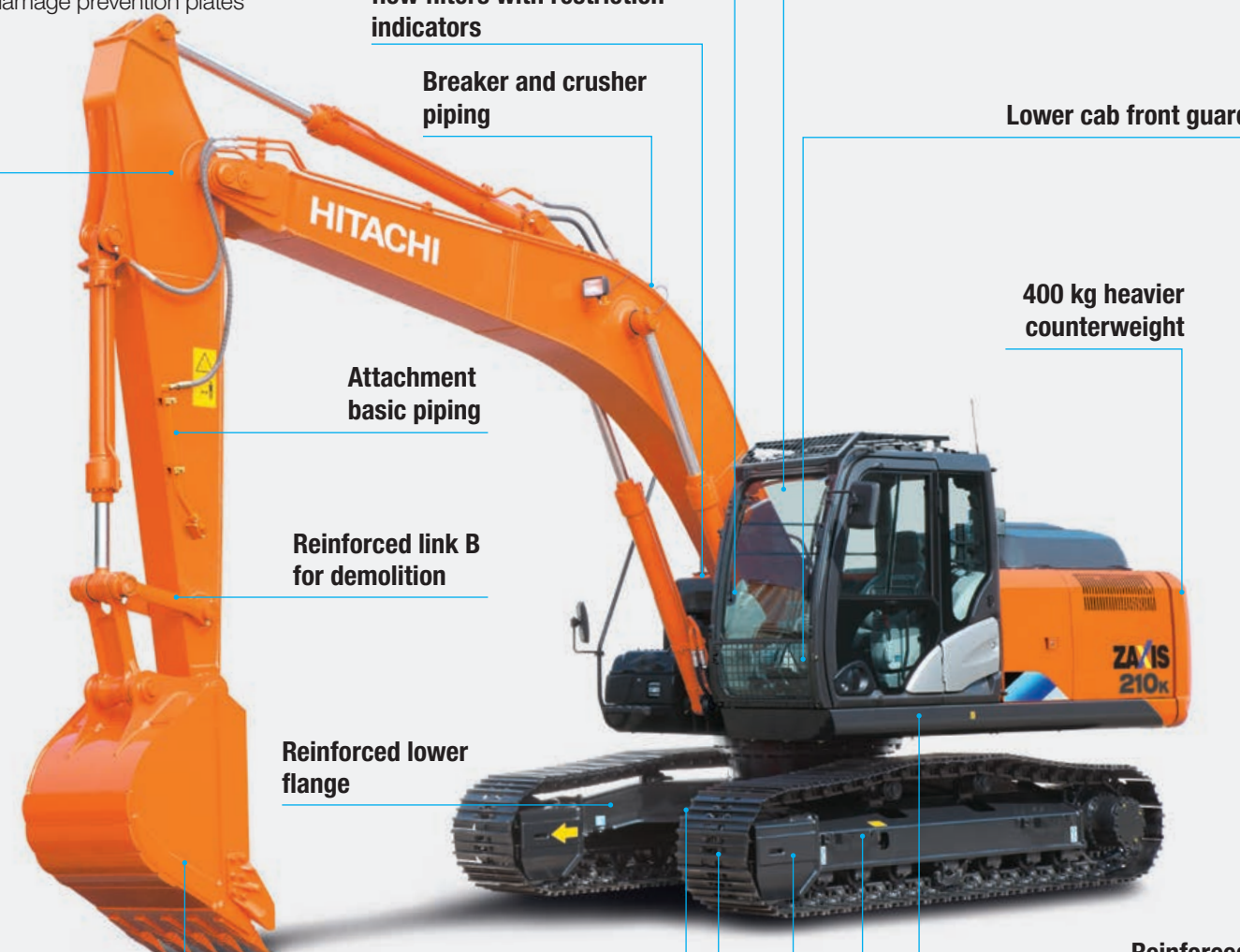
Lower cab front guard

400 kg heavier  
counterweight

Reinforced  
undercover 6.0 mm

Reinforced side step (bolted)

Reinforced idler bracket





# SPECIFICATIONS

ENGINE	
Model .....	Isuzu GH-4HK1X
Type .....	4-cycle water-cooled, direct injection
Aspiration .....	Turbocharged, intercooled
No. of cylinders .....	4
Rated power	
ISO 9249, net .....	113 kW (152 HP) at 2 000 min <sup>-1</sup> (rpm)
SAE J1349, net .....	113 kW (152 HP) at 2 000 min <sup>-1</sup> (rpm)
Maximum torque .....	638 Nm (65 kgfm) at 1 500 min <sup>-1</sup> (rpm)
Piston displacement ..	5.193 L
Bore and stroke .....	115 mm x 125 mm
Batteries .....	2 x 12 V / 88 Ah

HYDRAULIC SYSTEM	
<b>Hydraulic Pumps</b>	
Main pumps .....	2 variable displacement axial piston pumps
Maximum oil flow ..	2 x 212 L/min
Pilot pump .....	1 gear pump
Maximum oil flow ..	30.2 L/min

<b>Hydraulic Motors</b>	
Travel .....	2 variable displacement axial piston motors
Swing .....	1 axial piston motor

<b>Relief Valve Settings</b>	
Implement circuit .....	34.3 MPa (350 kgf/cm <sup>2</sup> )
Swing circuit .....	32.3 MPa (330 kgf/cm <sup>2</sup> )
Travel circuit .....	34.3 MPa (350 kgf/cm <sup>2</sup> )
Pilot circuit .....	3.9 MPa (40 kgf/cm <sup>2</sup> )
Power boost .....	38.0 MPa (387 kgf/cm <sup>2</sup> )

Hydraulic Cylinders			
	Quantity	Bore	Rod diameter
Boom	2	120 mm	85 mm
Arm	1	135 mm	95 mm
Bucket	1	115 mm	80 mm

UPPERSTRUCTURE	
<b>Revolving Frame</b>	
D-section frame skirt for resistance to deformation.	
<b>Swing Device</b>	
Axial piston motor with planetary reduction gear is bathed in oil. Swing circle is single-row. Swing parking brake is spring-set/hydraulic-released disc type.	
Swing speed .....	13.5 min <sup>-1</sup> (rpm)
Swing torque .....	68 kNm (6 900 kgfm)

<b>Operator's Cab</b>	
Independent spacious cab, 1 005 mm wide by 1 675 mm high, conforming to ISO* 10262 OPG Top Guard Level 1.	
* International Organization for Standardization	

UNDERCARRIAGE	
<b>Tracks</b>	
Heat-treated connecting pins with dirt seals. Hydraulic (grease) track adjusters with shock-absorbing recoil springs.	
<b>Numbers of Rollers and Shoes on Each Side</b>	
Upper rollers .....	2
Lower rollers .....	7 : ZX200-5A/ZX210H-5A/ZX210K-5A 8 : ZX200LC-5A/ZX210LCH-5A/ZX210LCK-5A
Track shoes .....	46 : ZX200-5A/ZX210H-5A/ZX210K-5A 49 : ZX200LC-5A/ZX210LCH-5A/ZX210LCK-5A
Track guard .....	1 : ZX200-5A/ZX210K-5A 2 : ZX210H-5A/ZX210LCK-5A/ZX200LC-5A 3 : ZX210LCH-5A

<b>Travel Device</b>	
Each track driven by 2-speed axial piston motor. Parking brake is spring-set/hydraulic-released disc type. Automatic transmission system: High-Low.	
Travel speeds .....	High : 0 to 5.5 km/h Low : 0 to 3.5 km/h

Maximum traction force ..	203 kN (20 700 kgf)
Gradeability .....	70% (35 degree) continuous

SERVICE REFILL CAPACITIES	
Fuel tank .....	400.0 L
Engine coolant .....	31.0 L
Engine oil .....	23.0 L
Swing device .....	6.2 L
Travel device (each side).....	6.8 L
Hydraulic system .....	240.0 L
Hydraulic oil tank .....	135.0 L

WEIGHTS AND GROUND PRESSURE						
<b>Operating weight and Ground pressure</b>						
			ZX200-5A <sup>*1</sup>		ZX200LC-5A <sup>*1</sup>	
Shoe type	Shoe width	Arm length	kg	kPa(kgf/cm <sup>2</sup> )	kg	kPa(kgf/cm <sup>2</sup> )
Triple grouser	600 mm	2.42 m	19 600	44 (0.45)	20 200	42 (0.43)
		2.91 m	19 700	44 (0.45)	20 200	42 (0.43)
	700 mm	2.42 m	20 000	38 (0.39)	20 600	36 (0.37)
		2.91 m	20 000	38 (0.39)	20 600	36 (0.37)
	800 mm	2.42 m	20 200	34 (0.35)	20 900	32 (0.33)
		2.91 m	20 300	34 (0.35)	20 900	32 (0.33)
Trianglar	760 mm	2.42 m	20 600	36 (0.37)	21 300	34 (0.35)
		2.91 m	20 700	36 (0.37)	21 300	34 (0.35)
Flat	600 mm	2.42 m	20 400	45 (0.46)	21 200	44 (0.45)
		2.91 m	20 500	46 (0.47)	21 100	44 (0.45)
Pad crawler	600 mm	2.42 m	19 900	44 (0.45)	21 100	43 (0.44)
		2.91 m	20 000	44 (0.45)	21 000	43 (0.44)

			ZX210H-5A <sup>*2</sup>		ZX210LCH-5A <sup>*2</sup>		ZX210K-5A <sup>*3</sup>		ZX210LCK-5A <sup>*3</sup>	
Shoe type	Shoe width	Arm length	kg	kPa(kgf/cm <sup>2</sup> )	kg	kPa(kgf/cm <sup>2</sup> )	kg	kPa(kgf/cm <sup>2</sup> )	kg	kPa(kgf/cm <sup>2</sup> )
Reinforced Triple grouser	600 mm	2.91 m	20 900	47 (0.48)	21 400	44 (0.45)	21 000	47 (0.48)	21 500	44 (0.45)

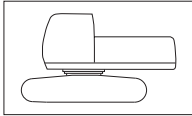
\*1 :Including 0.80 m³ (ISO heaped) bucket weight (660 kg) and counterweight (3 850kg).  
\*2 :Including 0.80 m³ (ISO heaped) H-bucket weight (760 kg) and counterweight (4 250kg).  
\*3 :Including 0.80 m³ (ISO heaped) reinforced bucket weight (750 kg) and counterweight (4 250kg).



# SPECIFICATIONS

## WEIGHT: BASIC MACHINE and COMPONENTS

### Basic Machine Weight and Overall width



Excluding front-end attachment, fuel, hydraulic oil, coolant, etc., and including counterweight.

ZX200-5A

Shoe width	Weight	Overall width
600 mm	15 200 kg	2 860 mm
700 mm	15 600 kg	2 910 mm
800 mm	15 900 kg	3 000 mm

ZX210H-5A

Shoe width	Weight	Overall width
600 mm	16 200 kg	2 860 mm

ZX210K-5A

Shoe width	Weight	Overall width
600 mm	16 300 kg	2 860 mm

ZX200LC-5A

Shoe width	Weight	Overall width
600 mm	15 800 kg	2 990 mm
700 mm	16 200 kg	3 090 mm
800 mm	16 500 kg	3 190 mm

ZX210LCH-5A

Shoe width	Weight	Overall width
600 mm	16 700 kg	2 990 mm

ZX210LCK-5A

Shoe width	Weight	Overall width
600 mm	16 800 kg	2 990 mm

### Component weights

	ZX200-5A / ZX200LC-5A	ZX210H-5A / ZX210LCH-5A	ZX210K-5A / ZX210LCK-5A
Counterweight	3 850 kg	4 250 kg	4 250 kg
Boom (with boom and arm cylinder)	2 100 kg	2 130 kg	2 150 kg
2.42 m arm (with bucket cylinder)	940 kg	—	—
2.91 m arm (with bucket cylinder)	1 000 kg	1 110 kg	1 140 kg
0.80 m³ bucket	660 kg	760 kg	750 kg

## BUCKET AND ARM DIGGING FORCES

Arm length	2.42 m	2.91 m
Bucket digging force* ISO	158 kN (16 200 kgf)	158 kN (16 200 kgf)
Bucket digging force* SAE	141 kN (14 400 kgf)	141 kN (14 400 kgf)
Arm crowd force* ISO	140 kN (14 200 kgf)	114 kN (11 600 kgf)
Arm crowd force* SAE	133 kN (13 600 kgf)	110 kN (11 200 kgf)

\* At power boost

## BACKHOE ATTACHMENTS

Boom and arms are of welded, box-section design. 5.68 m boom, and 2.42 m and 2.91 m arms are available. Bucket is of welded steel structure. Side clearance adjust mechanism provided on the bucket joint bracket.

### Buckets

Capacity	Width		No. Of teeth	Weight	Recommendation					
					ZX200-5A		ZX200LC-5A		ZX210H-5A ZX210LCH-5A	ZX210K-5A ZX210LCK-5A
ISO heaped	Without side cutters	With side cutters			Arm 2.42 m	Arm 2.91 m	Arm 2.42 m	Arm 2.91 m	H-arm 2.91 m	K-arm 2.91 m
0.51 m³	720 mm	830 mm	3	530 kg	⊙	⊙	⊙	⊙	⊙ ⊙	⊙ ⊙
0.80 m³	1 030 mm	1 140 mm	5	660 kg	⊙	⊙	⊙	⊙	⊙ ⊙	⊙ ⊙
0.91 m³	1 150 mm	1 260 mm	5	700 kg	⊙	○	⊙	⊙	○ ⊙	○ ⊙
1.10 m³	1 330 mm	1 440 mm	6	770 kg	□	—	□	○	— ○	— ○
1.20 m³	1 450 mm	—	6	690 kg	□	—	□	—	— —	— —
*1 0.80 m³	1 030 mm	1 140 mm	5	750 kg	⊙	⊙	⊙	⊙	⊙ ⊙	⊙ ⊙
*1 0.91 m³	1 150 mm	1 260 mm	5	800 kg	⊙	○	⊙	⊙	○ ⊙	○ ⊙
*2 0.80 m³	1 040 mm	1 150 mm	5	760 kg	⊙	⊙	⊙	⊙	⊙ ⊙	⊙ ⊙
*3 0.80 m³	1 030 mm	1 140 mm	5	660 kg	⊙	⊙	⊙	⊙	⊙ ⊙	⊙ ⊙
*4 0.80 m³	1 040 mm	1 150 mm	5	760 kg	⊙	⊙	⊙	⊙	⊙ ⊙	⊙ ⊙
*5 0.60 m³	800 mm	—	3	950 kg	●	—	●	—	— —	— —
One-point ripper			1	540 kg	●	—	●	—	— —	— —
Slope-finishing blade: Width 1 100 mm, length 1 800 mm			—	590 kg	◇	◇	◇	◇	◇ ◇	— —
V shape Bucket:			3	520 kg	○	○	○	○	○ ○	— —

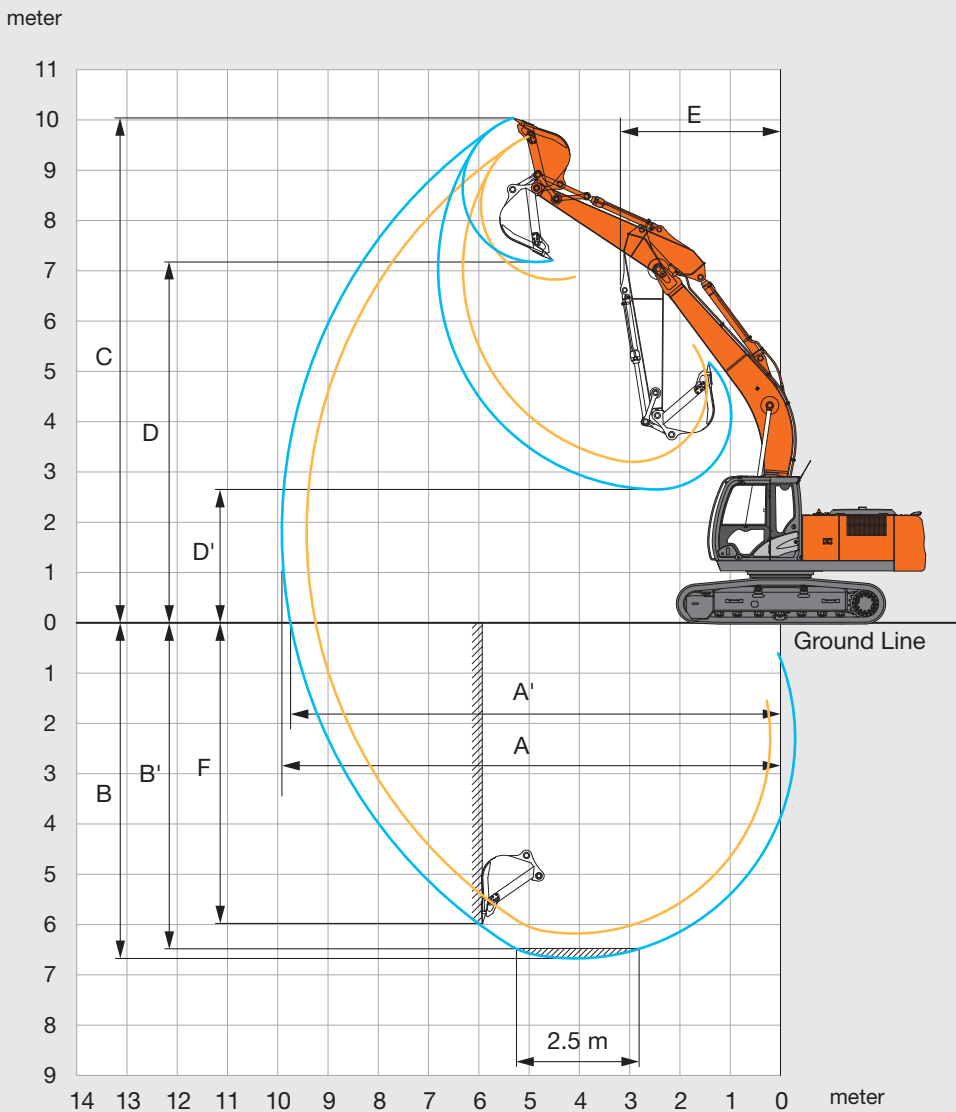
- \*1 Reinforced bucket  
\*2 H-bucket  
\*3 Level-pin-type bucket  
\*4 Super V teeth type bucket  
\*5 Ripper bucket

- ⊙ Suitable for materials with density of 2 000 kg/m³ or less  
○ Suitable for materials with density of 1 600 kg/m³ or less  
□ Suitable for materials with density of 1 100 kg/m³ or less  
● Heavy-duty service  
◇ Slope-finishing service  
— Not applicable



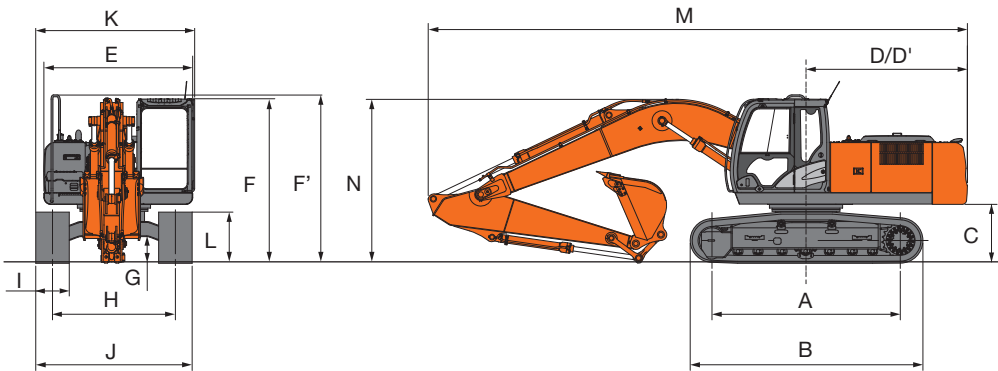
# SPECIFICATIONS

## WORKING RANGES



Unit: mm		
Arm length	2.42 m	2.91 m
A Max. digging reach	9 430	9 920
A' Max. digging reach (on ground)	9 250	9 750
B Max. digging depth	6 180	6 670
B' Max. digging depth for 2.5 m level	5 950	6 490
C Max. cutting height	9 670	10 040
D Max. dumping height	6 830	7 180
D' Min. dumping height	3 200	2 650
E Min. swing radius	3 280	3 180
F Max. vertical wall digging depth	5 300	5 990

## DIMENSIONS



Unit: mm

	ZX200-5A	ZX200LC-5A	ZX210H-5A	ZX210LCH-5A	ZX210K-5A	ZX210LCK-5A
A Distance between tumblers	3 370	3 660	3 370	3 660	3 370	3 660
B Undercarriage length	4 170	4 470	4 170	4 470	4 170	4 470
C Counterweight clearance	1 030	1 030	1 030	1 030	1 030	1 030
D Rear-end swing radius	2 890	2 890	2 890	2 890	2 890	2 890
D' Rear-end length	2 890	2 890	2 890	2 890	2 890	2 890
E Overall width of upperstructure	2 710	2 710	2 710	2 710	2 710	2 710
F Overall height of cab	2 950	2 950	2 950	2 950	3 080	3 080
F' Overall height of upperstructure	3 010	3 010	3 010	3 010	3 080	3 080
G Min. ground clearance	450	450	450	450	450	450
H Track gauge	2 200	2 390	2 200	2 390	2 200	2 390
I Track shoe width	G 600	G 600	G 600	G 600	G 600	G 600
J Undercarriage width	2 800	2 990	2 800	2 990	2 800	2 990
K Overall width	2 860	2 990	2 860	2 990	2 860	2 990
L Track height with triple grouser shoes	920	920	920	920	920	920
M Overall length						
With 2.42 m arm	9 750	9 750	—	—	—	—
With 2.91 m arm	9 660	9 660	9 660	9 660	9 660	9 660
N Overall height of boom						
With 2.42 m arm	3 180	3 180	—	—	—	—
With 2.91 m arm	2 940	2 940	2 940	2 940	2 940	2 940

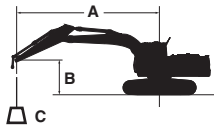
G: Triple grouser shoes



LIFTING CAPACITIES (Without Bucket)

- Notes: 1. Ratings are based on ISO 10567.  
2. Lifting capacity does not exceed 75% of tipping load with the machine on firm, level ground or 87% full hydraulic capacity.  
3. The load point is the center-line of the bucket pivot mounting pin on the arm.  
4. \*Indicates load limited by hydraulic capacity.  
5. 0 m = Ground.

For lifting capacities, subtract bucket and quick hitch weight from lifting capacities without bucket.



A: Load radius  
B: Load point height  
C: Lifting capacity




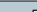

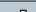
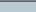
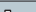

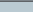
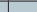

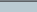

ZX200-5A										Rating over-front	Rating over-side or 360 degrees	Unit : kg		
Conditions	Load point height m	Load radius m										At max. reach		
		1.5		3.0		4.5		6.0		7.5				
														meter
Boom 5.68 m Arm 2.42 m Counterweight 3 850 kg Shoe 600 mm	6.0							*5 750	4 530			5 570	3 730	6.74
	4.5					*7 340	6 780	*6 230	4 380			4 640	3 090	7.48
	3.0					*9 210	6 250	6 370	4 160	4 540	3 000	4 210	2 780	7.87
	1.5					9 500	5 820	6 140	3 950	4 430	2 900	4 070	2 670	7.95
	0 (Ground)					9 280	5 630	5 990	3 820	4 370	2 840	4 180	2 730	7.74
	-1.5			*9 910	*9 910	9 260	5 610	5 950	3 780			4 610	2 990	7.21
	-3.0			*13 220	10 890	9 380	5 720	6 040	3 860			5 670	3 650	6.28
	-4.5					*6 880	6 010					*6 450	5 640	4.71
	-6.0													
Boom 5.68 m Arm 2.91 m Counterweight 3 850 kg Shoe 600 mm	6.0							*5 230	4 600			*4 040	3 290	7.32
	4.5					*6 610	*6 610	*5 780	4 440	4 670	3 120	*3 990	2 780	8.01
	3.0					*8 530	6 390	6 430	4 210	4 560	3 010	3 840	2 530	8.37
	1.5					9 610	5 910	6 170	3 980	4 440	2 900	3 720	2 430	8.45
	0 (Ground)			*4 850	*4 850	9 300	5 650	5 990	3 810	4 340	2 820	3 800	2 470	8.25
	-1.5	*5 480	*5 480	*9 100	*9 100	9 220	5 570	5 910	3 750	4 320	2 790	4 130	2 680	7.76
	-3.0	*9 970	*9 970	*14 390	10 720	9 290	5 630	5 950	3 780			4 900	3 170	6.90
	-4.5			*11 250	11 080	*8 120	5 840					*6 250	4 430	5.52
	-6.0													

ZX200LC-5A														Rating over-front	Rating over-side or 360 degrees	Unit : kg
Conditions	Load point height m	Load radius m										At max. reach				
		1.5		3.0		4.5		6.0		7.5						
														meter		
Boom 5.68 m	6.0							*5 750	5 080			*5 780	4 180	6.75		
Arm 2.42 m	4.5					*7 340	*7 340	*6 230	4 930			5 310	3 480	7.49		
Counterweight 3 850 kg	3.0					*9 210	7 100	*7 040	4 710	5 210	3 390	4 830	3 150	7.87		
	1.5					*10 720	6 660	7 110	4 490	5 100	3 300	4 680	3 030	7.96		
Shoe 600 mm	0 (Ground)					10 970	6 470	6 950	4 350	5 040	3 230	4 820	3 100	7.74		
	-1.5			*9 910	*9 910	*10 910	6 450	6 910	4 320			5 320	3 400	7.21		
	-3.0			*13 220	12 750	*9 730	6 560	7 000	4 400			6 560	4 150	6.28		
	-4.5					*6 880	6 860					*6 450	6 430	4.71		
	-6.0															
Boom 5.68 m	6.0							*5 230	5 080			*4 040	3 640	7.32		
Arm 2.91 m	4.5					*6 610	*6 610	*5 780	4 920	5 280	3 460	*3 990	3 090	8.01		
Counterweight 3 850 kg	3.0					*8 530	7 140	*6 650	4 680	5 170	3 350	*4 100	2 820	8.37		
	1.5					*10 260	6 650	7 060	4 440	5 040	3 240	4 220	2 720	8.45		
Shoe 600 mm	0 (Ground)			*4 850	*4 850	10 860	6 380	6 870	4 280	4 950	3 150	4 320	2 770	8.25		
	-1.5	*5 480	*5 480	*9 100	*9 100	10 770	6 310	6 790	4 210	4 920	3 130	4 700	3 000	7.76		
	-3.0	*9 970	*9 970	*14 390	12 380	*10 230	6 370	6 830	4 240			5 600	3 550	6.90		
	-4.5			*11 250	*11 250	*8 120	6 580					*6 250	4 960	5.52		
	-6.0															

ZX210H-5A										Rating over-front	Rating over-side or 360 degrees	Unit : kg		
Conditions	Load point height m	Load radius m										At max. reach		
		1.5		3.0		4.5		6.0		7.5				
														meter
H-Boom 5.68 m	6.0							*5 140	4 870			*3 980	3 480	7.32
H-Arm 2.91 m	4.5					*6 520	*6 520	*5 680	4 710	4 940	3 300	*3 930	2 950	8.01
Counterweight 4 250 kg	3.0					*8 410	6 790	*6 540	4 470	4 820	3 190	*4 040	2 680	8.37
	1.5					*10 130	6 290	6 540	4 220	4 690	3 080	3 930	2 580	8.45
Shoe 600 mm	0 (Ground)			*4 790	*4 790	9 880	6 020	6 350	4 060	4 600	2 990	4 020	2 620	8.25
	-1.5	*5 420	*5 420	*9 050	*9 050	9 800	5 950	6 270	3 990	4 570	2 960	4 370	2 840	7.76
	-3.0	*9 920	*9 920	*14 230	11 470	9 870	6 010	6 310	4 020			5 200	3 370	6.90
	-4.5			*11 100	*11 100	*8 000	6 230					*6 140	4 720	5.52
	-6.0													

ZX210LCH-5A								Rating over-front	Rating over-side or 360 degrees	Unit : kg				
Conditions	Load point height m	Load radius m										At max. reach		
		1.5		3.0		4.5		6.0		7.5				
														meter
H-Boom 5.68 m	6.0							*5 140	*5 140			*3 980	3 850	7.32
	4.5					*6 520	*6 520	*5 680	5 210	*5 300	3 660	*3 930	3 280	8.01
H-Arm 2.91 m	3.0					*8 410	7 580	*6 540	4 960	5 460	3 550	*4 040	2 990	8.37
Counterweight 4 250 kg	1.5					*10 130	7 070	*7 410	4 720	5 330	3 430	*4 310	2 880	8.45
Shoe 600 mm	0 (Ground)			*4 790	*4 790	*10 980	6 790	7 270	4 540	5 240	3 340	4 570	2 930	8.25
	-1.5	*5 420	*5 420	*9 050	*9 050	*10 950	6 720	7 190	4 470	5 210	3 320	4 980	3 180	7.76
	-3.0	*9 920	*9 920	*14 230	13 210	*10 090	6 780	7 240	4 510			5 930	3 760	6.90
	-4.5			*11 100	*11 100	*8 000	7 010					*6 140	5 270	5.52
	-6.0													

ZX210K-5A										Rating over-front	Rating over-side or 360 degrees	Unit : kg		
Conditions	Load point height m	Load radius m										At max. reach		
		1.5		3.0		4.5		6.0		7.5				
														meter
Boom 5.68 m	6.0							*5 140	4 880			*3 990	3 480	7.32
K-Arm 2.91 m	4.5					*6 520	*6 520	*5 680	4 720	4 940	3 300	*3 930	2 950	8.01
Counterweight	3.0					*8 410	6 800	*6 540	4 470	4 830	3 200	*4 040	2 680	8.37
4 250 kg	1.5					*10 130	6 290	6 550	4 230	4 700	3 080	3 940	2 580	8.45
Shoe 600 mm	0 (Ground)			*4 790	*4 790	9 890	6 020	6 350	4 060	4 600	2 990	4 020	2 620	8.25
	-1.5	*5 430	*5 430	*9 050	*9 050	9 800	5 940	6 270	3 990	4 570	2 960	4 370	2 840	7.76
	-3.0	*9 920	*9 920	*14 210	11 460	9 880	6 010	6 310	4 020			5 200	3 360	6.90
	-4.5			*11 080	*11 080	*7 980	6 220					*6 130	4 710	5.52
	-6.0													

ZX210LCK-5A										 Rating over-front	 Rating over-side or 360 degrees	Unit : kg		
Conditions	Load point height m	Load radius m										At max. reach		
		1.5		3.0		4.5		6.0		7.5				
														meter
Boom 5.68 m	6.0							*5 140	*5 140			*3 990	3 860	7.32
K-Arm 2.91 m	4.5					*6 520	*6 520	*5 680	5 220	*5 300	3 660	*3 930	3 280	8.01
Counterweight 4 250 kg	3.0					*8 410	7 600	*6 540	4 970	5 470	3 560	*4 040	2 990	8.37
	1.5					*10 130	7 070	*7 410	4 720	5 340	3 430	*4 320	2 880	8.45
Shoe 600 mm	0 (Ground)			*4 790	*4 790	*10 970	6 790	7 280	4 550	5 240	3 340	4 570	2 930	8.25
	-1.5	*5 430	*5 430	*9 050	*9 050	*10 940	6 720	7 200	4 470	5 210	3 320	4 980	3 180	7.76
	-3.0	*9 920	*9 920	*14 210	13 210	*10 080	6 780	7 240	4 510			5 930	3 760	6.90
	-4.5			*11 080	*11 080	*7 980	7 010					*6 130	5 270	5.52
	-6.0													



Standard and optional equipment may vary by country, so please consult your Hitachi dealer for details.

● : Standard equipment                      ○ : Optional equipment

	ZX200-5A / ZX200LC-5A	ZX210H-5A / ZX210LCH-5A	ZX210K-5A / ZX210LCK-5A
ENGINE			
Air cleaner double filters	●	●	●
Alternator 50 A	●	●	●
Auto idle system	●	●	●
Auto shut-down control	●	●	●
Cartridge-type engine oil filter	●	●	●
Cartridge-type fuel main filter	●	●	●
Cartridge-type fuel pre-filter with water separator	●	●	●
Dry-type air filter with evacuator valve (with air filter restriction indicator)	●	●	●
Dust-proof indoor net	●	●	●
ECO/PWR mode control	●	●	●
Engine oil drain coupler	●	●	●
Engine warm-up device	●	●	●
Fan guard	●	●	●
Fuel cooler	●	●	●
Maintenance free pre-cleaner	○	○	○
Radiator expansion tank	●	●	●

HYDRAULIC SYSTEM			
Auto power lift	●	●	●
Control valve with main relief valve	●	●	●
Full-flow filter	●	●	—
High mesh full flow filter with restriction indicator	○	○	●
One extra port for control valve	●	●	●
Pilot filter	●	●	●
Power boost	●	●	●
Suction filter	●	●	●
Work mode selector	●	●	●

	ZX200-5A / ZX200LC-5A	ZX210H-5A / ZX210LCH-5A	ZX210K-5A / ZX210LCK-5A
CAB			
All-weather sound suppressed steel cab	●	●	●
AM-FM radio with 2 speaker	●	●	●
Ashtray	●	●	●
Auto control air conditioner	●	●	●
AUX. terminal and storage	○	○	○
Cab (Center pillar reinforced structure)	●	●	●
Cigarette lighter 24V	●	●	●
Drink holder	●	●	●
Drink holder with hot & cool	●	●	●
Electric double horn	●	●	●
Engine shut-off switch	●	●	●
Evacuation hammer	●	●	●
Floor mat	●	●	●
Footrest	●	●	●
Front window washer	●	●	●
Front windows on upper, lower and left side can be opened	●	●	●
Glove compartment	●	●	●
Hot & cool box	●	●	●
Intermittent windshield wipers	●	●	●
K-cab (with overhead window and guard)	—	—	●
Key cylinder light	●	●	●
LED room light with door courtesy	●	●	●
OPG top guard Level I (ISO10262) compliant cab	●	●	●
Pilot control shut-off lever	●	●	●
Rain guard	○	○	○
Rear tray	●	●	●
Retractable seat belt	●	●	●
ROPS (ISO 12117-2) compliant cab	○	○	○
Rubber radio antenna	●	●	●
Seat : air suspension seat with heater	○	○	○
Seat : fablic seat	●	●	●
Seat : mechanical suspension seat	○	○	○
Seat adjustment part : backrest, armrest, height and angle, slide forward / back	●	●	●
Short wrist control levers (Bold type)	○	○	○
Short wrist control levers (Slim type)	●	●	●
Twin wiper	—	—	●
Lower cab front guard	○	●	●
Upper cab front guard	○	○	○
4 fluid-filled elastic mounts	●	●	●
12V power source	○	○	○

	ZX200-5A / ZX200LC-5A	ZX210H-5A / ZX210LCH-5A	ZX210K-5A / ZX210LCK-5A
MONITOR SYSTEM			
Alarms: overheat, engine warning, engine oil pressure, alternator, minimum fuel level, hydraulic filter restriction, air filter restriction, work mode, overload, etc	●	●	●
Alarm buzzers: overheat, engine oil pressure, overload	●	●	●
Display of meters: water temperature, hour, fuel rate, clock	●	●	●
Other displays: work mode, auto-idle, glow, rearview monitor, operating conditions, etc	●	●	●
32 languages selection	●	●	●

LIGHTS			
Additional boom light with cover	○	○	○
Additional cab roof front lights	○	○	○
Rear light	○	○	○
2 working lights	●	●	●

UPPER STRUCTURE			
Batteries 2 x 88 Ah	●	●	●
Counterweight 3 850 kg	●	—	—
Counterweight 4 250 kg	○	●	●
Electric fuel refilling pump	○	○	○
Fuel level float	●	●	●
Hydraulic oil level gauge	●	●	●
Lockable fuel refilling cap	●	●	●
Lockable machine covers	●	●	●
Rear view camera	●	●	●
Rear view mirror (right & left side)	●	●	●
Swing parking brake	●	●	●
Tool box	●	●	●
Undercover	●	—	—
Undercover 6.0 mm reinforced	○	●	●
Utility space	●	●	●

	ZX200-5A / ZX200LC-5A	ZX210H-5A / ZX210LCH-5A	ZX210K-5A / ZX210LCK-5A
UNDERCARRIAGE			
Bolt-on sprocket	●	●	●
Reinforced lower flange	—	●	●
Reinforced idler bracket	—	●	●
Reinforced side step	—	●	●
Reinforced track links with pin seals	●	●	●
Shoe: 600 mm triple grouser	●	● Reinforced	● Reinforced
Track undercover 9.0 mm reinforced	—	○	●
Travel direction mark on track frame	●	●	●
Travel motor covers	●	●	●
Travel parking brake	●	●	●
Upper and lower rollers	●	●	●
1 track guard (each side)	● ZX200-5A	—	● ZX210K-5A
2 track guards (each side)	● ZX200LC-5A	● ZX210H-5A	● ZX210LCK-5A
3 track guards (each side)	—	● ZX210LCH-5A	—
4 tie down brackets	●	●	●

FRONT ATTACHMENTS			
Arm 2.42 m	○	○	○
Arm 2.91 m	●	● H-Arm	● K-Arm
Boom 5.68 m	●	● H-Boom	●
Bucket 0.80 m³ (ISO heaped)	●	● H-Bucket	● Reinforced Bucket
Centralized lubrication system	●	●	●
Dirt seal on all bucket pins	●	●	●
Flanged pin	●	●	●
HN bushing	●	●	●
Reinforced link B	—	●	● for demolition
Reinforced resin thrust plate	●	●	●
WC (tungsten-carbide) thermal spraying	●	●	●

ATTACHMENTS			
Additional pump	○	○	○
Assist piping	○	○	○
Attachment basic piping	○	○	●
Breaker and crusher piping	○	○	●
Line filter	○	○	○
Parts for breaker and crusher	○	○	●
Pilot accumulator	○	○	●
2 pump combined flow for attachment basic piping	○	○	●

MISCELLANEOUS			
Global e-Service	●	●	●
Onboard information controller	●	●	●
Skid-resistant plates and handrails	●	●	●
Standard tool kit	●	●	●
Swing motion alarm device with lumps	○	○	○
Travel motion alarm device	○	○	○



[illegible][illegible]





**Built on the foundation of superb technological capabilities, Hitachi Construction Machinery is committed to providing leading-edge solutions and services to contribute as a reliable partner to the business of customers worldwide.**

## Hitachi Environmental Vision 2025

The Hitachi Group released the Environmental Vision 2025 to curb annual carbon dioxide emissions. The Group is committed to global production while reducing environmental impact in life cycles of all products, and realizing a sustainable society by tackling three goals — prevention of global warming, conservation of resources, and preservation of ecosystem.

### Reducing Environmental Impact by New ZAXIS

Hitachi makes a green way to cut carbon emissions for global warming prevention according to LCA\*. New ZAXIS utilizes lots of technological advances, including the new ECO mode, and Isochronous Control. Hitachi has long been committed to recycling of components, such as aluminum parts in radiators and oil cooler. Resin parts are marked for recycling.

\*Life Cycle Assessment – ISO 14040

Before using a machine with a satellite communication system, please make sure that the satellite communication system complies with local regulations, safety standards and legal requirements. If not so, please make modifications accordingly.

These specifications are subject to change without notice.

Illustrations and photos show the standard models, and may or may not include optional equipment, accessories, and all standard equipment with some differences in color and features.

Before use, read and understand the Operator's Manual for proper operation.