

# ZAXIS330



## HYDRAULIC EXCAVATOR

Model Code : ZX330-5A / ZX330LC-5A / ZX350H-5A / ZX350LCH-5A  
ZX350K-5A / ZX350LCK-5A

Engine Rated Power : 190 kW (254 HP)

Operating Weight : ZX330-5A : 31 800 kg	ZX330LC-5A : 32 300 kg
ZX350H-5A : 33 900 kg	ZX350LCH-5A : 34 400 kg
ZX350K-5A : 34 200 kg	ZX350LCK-5A : 34 800 kg

Backhoe Bucket : ISO Heaped : 1.15 - 1.86 m<sup>3</sup>



# ZAXIS Empower your Vision.

New ZAXIS provides reliable solutions: impressive fuel economy, swift front movements, and easy operation. You'll also find Hitachi technological prowess and expertise, such as the optimized hydraulic system and engine.

New ZAXIS features the key benefits of high quality, low fuel consumption, and high durability, all of which serve to ensure low running costs.

New ZAXIS, which is empowered by comprehensive evolution, will realize customers' visions and dreams, and pioneer your colorful future.



## More Production with Less Fuel

Page 4-5

- Achieving low fuel consumption and a large workload
- Powerful operation
- Easy-to-use attachments



## No Compromise on Operator Comfort

Page 8-9

- Comfortable operating environment
- Comfort-designed operator seat
- Robust cab
- New, easy-to-use multifunction monitor



## Hitachi Support Chain

Page 12-13

- Remote fleet management with Global e-Service
- Parts and service



## High Quality and Durability

Page 6-7

- New more reliable and durable engine
- Durable design
- Improved engine start-up performance in cold weather



## Simplified Maintenance

Page 10-11

- Dust-proof indoor net
- Grouped remote inspection points
- Bottom cover for fuel tank cleaning
- Low life cycle costs



## Various Versions

Page 14-15

- Heavy-duty version: H-series
- Demolition version: K-series



Note: The photos in this brochure show excavators with optional equipment.



## More Production with Less Fuel



### Achieving Low Fuel Consumption and a Large Workload

The HIOS III hydraulic system, which is an operator-friendly HIOS hydraulic system combined with efficient hydraulic control, was selected. It includes an hydraulic boosting system and an enhanced boom recirculation system to increase operating speed and reduce fuel consumption.

#### 13% Reduction in Fuel Consumption

New ZAXIS is a fuel-thrifty excavator that can reduce fuel consumption by 13%, compared to the conventional ZX330-3.

#### More Fuel Reduction in the ECO Mode

The ECO mode, a new economical mode, can further cut fuel consumption by 14% compared to the PWR mode.

#### Rapid Arm Roll-in

Arm roll-in speed increases by combined flow from arm and boom cylinders through regenerative valves for productive excavation.

#### Fast Arm Speed During Boom Lowering

Arm speed increases by boom weight during boom lowering, without needing pressure oil from a pump. That is, arm circuit flow is increased for higher arm speed, allowing for quick loading of a dump truck and positioning of the front.

### Powerful Operation

The Power Boost mode allows the operator to surge 10% more digging force for powerful excavation by pressing its button on the control lever. It can obtain the big digging force when the power is needed.

### Easy-to-Use Attachments

The operator can change over valves, adjust extra circuit flow, and check settings from the multifunctional monitor next to the operator seat. What's more, 11 types, including flow rate setting, can easily be selected by their identified names.





## High Quality and Durability



### Prestige R&D and Quality Control



Mid-sized excavator assembly line



Main frame welding line



Computer-Aided Engineering



Main pump testing area

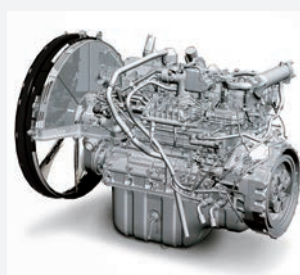


Simulation testing from operator seat

Hitachi has earned praise for technological prowess and product performance around the world. R&D Division has a track record – including excellent design, stress analysis expertise using CAE system, and abundant production data base. What's more, a large-scale durability test field allows for a series of stringent testing of new machines. Production Division strives to automatize production processes, including robotic welding, machining, painting, assembling and transferring.

### New More Reliable and Durable Engine

The new engine, which is designed for use in harsh operating environment, is highly durable thanks to a fundamental review of the fuel and cooling systems. It also includes a new auto-idle stop mechanism to reduce fuel consumption and CO<sub>2</sub> emissions.

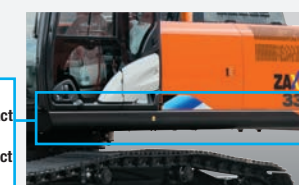
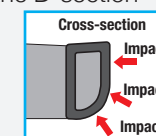


### Durable Design

Large size efficiency cooling system keeps engine cool, helps machine hard works. In addition, the expansion tank is adopted in the cooling system. So, the air in the coolant circuit can always be discharged and display the cooling performance of the machine fully.



The upperstructure frame is reinforced with the D-section skirt to increase rigidity against damage by obstacles.



D-section skirt

The X-beam frame is made monolithically with fewer welds for higher rigidity and durability.



X-beam frame

Front idlers and adjuster cylinders are integrated to increase durability. Idler brackets and travel motor brackets are both thickened for added durability.

The boom top and foot are reinforced with thickened high-tensile steel brackets, which incorporate steel bushings to enhance durability.

The arm-bucket joint is protected by WC thermal spraying on its contact surfaces to reduce wear and jolt. The HN bushings, utilized on joint pins, retain grease inside for longer greasing intervals.

### Improved Engine Start-up Performance in Cold Weather

When the ambient temperature is low, waxing light oil components will clog the fuel pre-filter. The recirculation filter prevents this by recirculating hot fuel from the engine.



Recirculation filter



# No Compromise on Operator Comfort



## Comfortable Operating Environment

You'll feel comfortable and confident, with plenty of leg space and excellent visibility when operating in the cab. The new compact console gives more leg space. The new door pillar is shifted rearward by 70 mm to widen an entry space for easy access. A new LED room light, interlocked with the door, turns on when the door opens. The front window is easily removed and stored overhead using slide rails. The overhead window is openable for ventilation. Ample air conditioner vents are located strategically for uniform air circulation inside the cab. The control panel and control levers are arranged within easy reach of the operator. AM/FM radio and AUX port (optional) for a mobile music player are available for a long work day with less fatigue. All these designs focus on operator comfort.

## Comfort-Designed Operator Seat

The luxury cloth seat is fitted with a headrest and arm rests for operator comfort. The seat can be adjusted in multiple ways, sliding and reclining, to suit operator's size and preferences. The seat can slide rearward by 40 mm more for added leg space. An air suspension seat with a heat pad is optional.

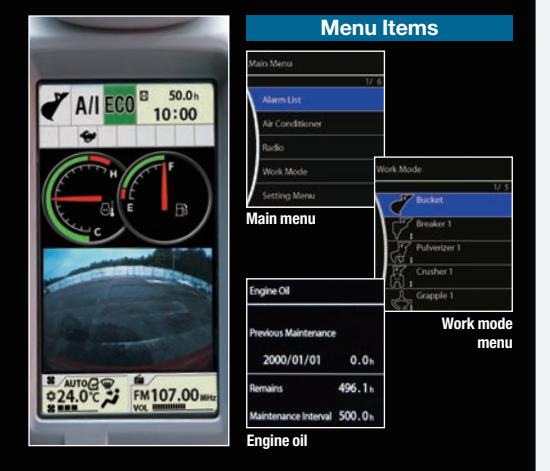
## Robust Cab

The robust cab, meeting the OPG (Top Guard Level 1), protects the operator from falling objects. The Roll-over Protective structure (ROPS) is designed to unlikely event of machine tipping or rolling over (Optional). The pilot control shut-off lever is provided with a neutral engine start system that permits engine starting only when the pilot control shut-off lever is in Lock position.



## New, Easy-to-Use Multifunction Monitor

The new multi-language, multifunction monitoring system comprises a 7-inch high-resolution color monitor and a multifunction controller. The monitor allows the operator to check varying operating variables: hydraulic oil temperature, fuel level, work mode, full-auto air conditioner, AM/FM radio, rear view monitor camera, maintenance support, and attachment flow adjustment. Menu items can be selected and adjusted by a multifunction controller on the control panel. A new rear view monitor camera always displays the view behind the machine.





## Simplified Maintenance



### Dust-Proof Indoor Net

A dust-proof indoor net, provided at the front of radiator, can be easily removed and cleaned with compressed air. At the rear of the radiator, air blowing can be done through a one-touch open cover. The air condenser is openable for easy cleaning at its rear.



### Grouped Remote Inspection Points

Service points are concentrated inside left and right covers that are readily accessible from ground level for convenient servicing and inspection, including water draining from the fuel tank, and replacement of filters.

### Bottom Cover for Fuel Tank Cleaning

The fuel tank is equipped with a bottom cover, allowing for easy cleaning of the inside of the tank.

### Low Life Cycle Costs

Service intervals are long enough to slash maintenance costs.

Engine Oil Filter : 500 h  
Hydraulic Oil Filter : 1 000 h  
Fuel Filter : 1 000 h  
Fuel Pre-Filter : 1 000 h

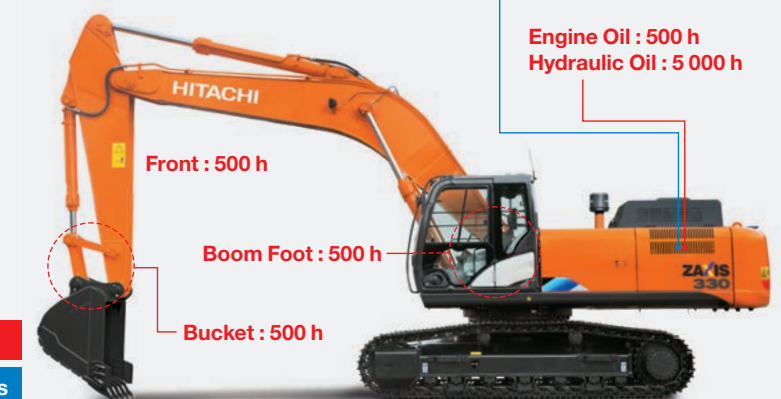
Engine Oil : 500 h  
Hydraulic Oil : 5 000 h

Front : 500 h

Boom Foot : 500 h

Bucket : 500 h

Lubricant  
Consumables





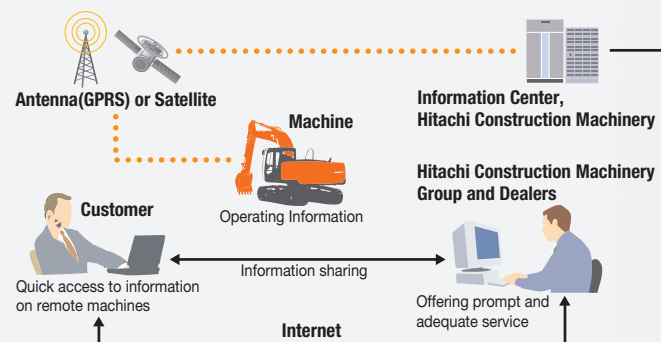
## Hitachi Support Chain

Hitachi Support Chain is a full customer support system offered after buying a Hitachi machine.

### Remote Fleet Management with Global e-Service

#### Easy Access to On-Site Machines through the Internet

This on-line fleet management system allows you to access each on-site machine from a PC in your office. You can get its operating information and location to increase productivity of the fleet and reduce downtime. Operating data and log are sent to a Hitachi server for processing, and then to customer and dealers around the world. This system is available 24 hours a day, all the year around.



Note: In Some Regions, Global e-Service Is Not Available by Local Regulations.

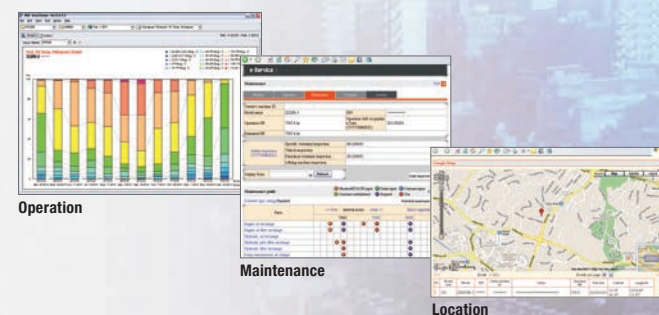
#### Main Features of Global e-Service

##### Functions

Global e-Service provides easy access to a machine on site, conveying operating information and log, including daily operating hours, fuel level, temperatures, pressures, and likes.

##### Maintenance

Maintenance data and log are displayed on a easy-to-read monitor screen, suggesting recommended maintenance for efficient fleet management.



### Parts and Service

Hitachi full customer support is available every area on the globe for full customer satisfaction through Hitachi local dealers.

#### Parts

Hitachi Global Online Network, a parts supply system, is linked with Japan Parts Center, overseas depots and over 150 dealers abroad to deliver on-line parts information, including in-stock parts, order receptions, shipments and delivery period of over one million parts and components.

##### Genuine Hitachi Parts

Genuine Hitachi parts, meeting Hitachi stringent quality standards, are guaranteed according to Hitachi warranty standards. The use of genuine Hitachi parts, including engine, fuel, hydraulic oil and filters, may slash running costs, and extend machine life.

##### Ground Engaging Tools (GETs)

Hitachi provides an array of Hitachi Ground Engaging Tools developed and built for a variety of applications.

Using high-quality, well-maintained GETs will help you get customers' trust.

Note: Some dealers do not handle Hitachi GETs.

##### Remanufactured Components

Hitachi components are remanufactured according to the stringent remanufacturing standards at factories around the world. They have high quality equivalent to new ones, and backed up by Hitachi warranty system.

Note: Some dealers do not handle Hitachi Remanufactured Components.

#### Service

##### Extended Warranty — HELP

Hitachi Standard Warranty System is available on all new Hitachi machines. In addition, Hitachi offers Hitachi Extended Life Programs (HELPS) to suit customer expectations —

protecting machines under tough operating conditions, avoiding unexpected downtime, and reducing repair costs.

Note: Warranty conditions vary by equipment.

##### Diagnostic Tools — Maintenance Pro

Electronic control system needs quick on-site solutions, apart from mechanical repairs. Hitachi's Maintenance Pro can diagnose machine failures in a short time by plugging a PC into a failed machine.

##### Technical Training

On-site servicing matters despite locations to keep the machine at peak performance and reduce downtime. Technical Training Center (TTC), located in Japan, educates and trains service technicians and service support personnel coming from Hitachi dealers and factories on the globe according to the international training programs.



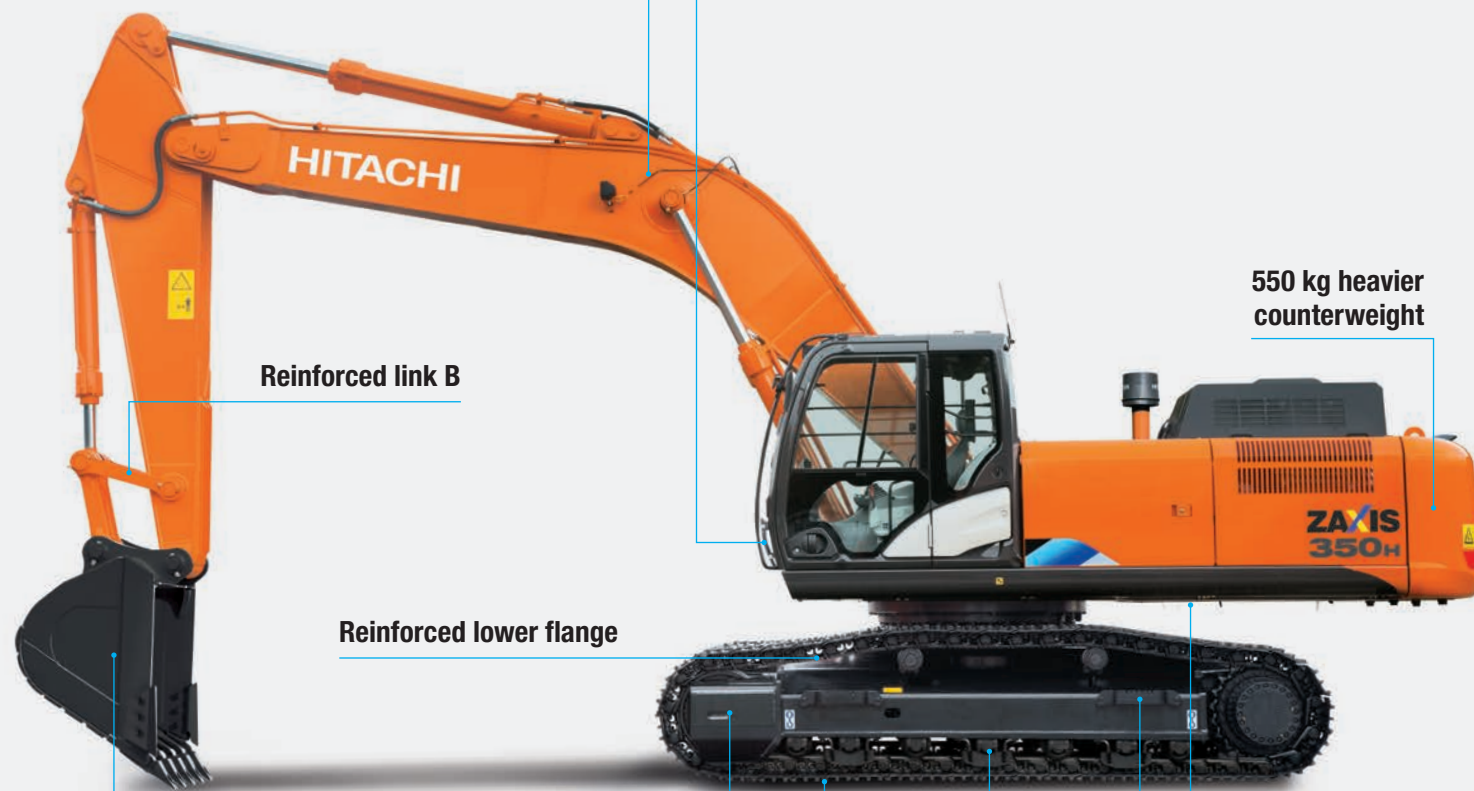
## Various Versions

### Heavy-Duty Version: H-Series **ZAXIS 350H**

#### Reinforced front attachment (H-boom / H-arm)

Thickened steel plates, damage prevention plates and square bars

#### Lower cab front guard



#### Reinforced link B

550 kg heavier counterweight

#### Reinforced lower flange

Reinforced undercover 6.0 mm

#### Reinforced idler bracket

Reinforced side step (bolted)

#### Rock bucket 1.38 m³

Thickened steel plates, additional lateral-type wear plates, and additional reinforcement plates at cutting edges

Reinforced triple grouser shoes 600 mm

Reinforced track guards (3 on each side)

### Demolition Version: K-Series **ZAXIS 350K**

#### Reinforced front attachment (K-arm)

Thickened steel plates, and damage prevention plates

#### Twin wipers

#### Breaker and crusher piping

#### K-cab (Cab with overhead window & guard)

#### Lower cab front guard

1 250 kg heavier counterweight

#### Attachment basic piping

High-performance full-flow filters with restriction indicator

#### Reinforced lower flange

#### Reinforced link B for demolition

Reinforced track undercover 9 mm

Reinforced triple grouser shoes 600 mm

Reinforced side step (bolted)

Reinforced idler bracket

1.40 m³ reinforced bucket



# SPECIFICATIONS

ENGINE	
Model .....	Isuzu GH-6HK1X
Type .....	4-cycle water-cooled, direct injection
Aspiration .....	Turbocharged, intercooled
No. of cylinders .....	6
Rated power	
ISO 9249, net .....	190 kW (254 HP) at 1 900 min <sup>-1</sup> (rpm)
SAE J1349, net .....	190 kW (254 HP) at 1 900 min <sup>-1</sup> (rpm)
Maximum torque .....	1 037 Nm (106.0 kgfm) at 1 500 min <sup>-1</sup> (rpm)
Piston displacement ..	7.790 L
Bore and stroke .....	115 mm x 125 mm
Batteries .....	2 x 12 V / 128 Ah

HYDRAULIC SYSTEM	
<b>Hydraulic Pumps</b>	
Main pumps .....	2 variable displacement axial piston pumps
Maximum oil flow ..	2 x 288 L/min
Pilot pump .....	1 gear pump
Maximum oil flow ..	30.2 L/min

<b>Hydraulic Motors</b>	
Travel .....	2 variable displacement axial piston motors
Swing .....	1 axial piston motor

<b>Relief Valve Settings</b>	
Implement circuit .....	34.3 MPa (350 kgf/cm <sup>2</sup> )
Swing circuit .....	32.4 MPa (330 kgf/cm <sup>2</sup> )
Travel circuit .....	34.8 MPa (355 kgf/cm <sup>2</sup> )
Pilot circuit .....	3.9 MPa (40 kgf/cm <sup>2</sup> )
Power boost .....	38.0 MPa (388 kgf/cm <sup>2</sup> )

	Quantity	Bore	Rod diameter
Boom	2	145 mm	100 mm
Arm	1	170 mm	115 mm
Bucket	1	140 mm	95 mm

UPPERSTRUCTURE	
<b>Revolving Frame</b>	
D-section frame skirt for resistance to deformation.	
<b>Swing Device</b>	
Axial piston motor with planetary reduction gear is bathed in oil. Swing circle is single-row. Swing parking brake is spring-set/hydraulic-released disc type.	
Swing speed .....	10.7 min <sup>-1</sup> (rpm)
Swing torque .....	120 kNm (12 200 kgfm)

<b>Operator's Cab</b>	
Independent spacious cab, 1 005 mm wide by 1 675 mm high, conforming to ISO* 10262 OPG Top Guard Level 1.	
* International Organization for Standardization	

UNDERCARRIAGE	
<b>Tracks</b>	
Heat-treated connecting pins with dirt seals. Hydraulic (grease) track adjusters with shock-absorbing recoil springs.	
<b>Numbers of Rollers and Shoes on Each Side</b>	
Upper rollers .....	2
Lower rollers .....	7 : ZX330-5A/ZX350H-5A/ZX350K-5A 8 : ZX330LC-5A/ZX350LCH-5A/ZX350LCK-5A
Track shoes .....	45 : ZX330-5A/ZX350H-5A/ZX350K-5A 48 : ZX330LC-5A/ZX350LCH-5A/ZX350LCK-5A
Track guard .....	3

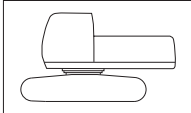
<b>Travel Device</b>	
Each track driven by 2-speed axial piston motor. Parking brake is spring-set/hydraulic-released disc type. Automatic transmission system: High-Low.	
Travel speeds .....	High : 0 to 5.0 km/h Low : 0 to 3.2 km/h
<b>Maximum traction force ..</b>	
298 kN (30 400 kgf)	

Gradeability .....	70% (35 degree) continuous
<b>SERVICE REFILL CAPACITIES</b>	
Fuel tank .....	630 L
Engine coolant .....	35 L
Engine oil .....	41 L
Swing device .....	15.7 L
Travel device (each side).....	9.2 L
Hydraulic system .....	340 L
Hydraulic oil tank .....	180 L

WEIGHTS AND GROUND PRESSURE						
<b>Operating weight and Ground pressure</b>						
			ZX330-5A <sup>*1</sup>		ZX330LC-5A <sup>*1</sup>	
Shoe type	Shoe width	Arm length	kg	kPa(kgf/cm <sup>2</sup> )	kg	kPa(kgf/cm <sup>2</sup> )
Triple grouser	600 mm	2.67 m	31 600	64 (0.65)	32 100	62 (0.63)
		3.20 m	31 800	64 (0.65)	32 300	61 (0.62)
		4.00 m	31 900	65 (0.66)	32 400	62 (0.63)
	700 mm	2.67 m	32 200	56 (0.57)	32 700	54 (0.55)
		3.20 m	32 300	56 (0.57)	32 900	53 (0.54)
		4.00 m	32 400	56 (0.57)	32 800	54 (0.55)
	800 mm	2.67 m	32 500	49 (0.50)	33 100	48 (0.49)
		3.20 m	32 700	49 (0.50)	33 300	47 (0.48)
		4.00 m	32 700	50 (0.51)	33 400	48 (0.49)
Flat	600 mm	2.67 m	32 500	66 (0.67)	33 000	63 (0.64)
		3.20 m	32 600	66 (0.67)	33 200	64 (0.65)
		4.00 m	32 700	66 (0.67)	33 300	64 (0.65)

			ZX350H-5A <sup>*2</sup>		ZX350LCH-5A <sup>*2</sup>		ZX350K-5A <sup>*3</sup>		ZX350LCK-5A <sup>*3</sup>	
Shoe type	Shoe width	Arm length	kg	kPa(kgf/cm <sup>2</sup> )	kg	kPa(kgf/cm <sup>2</sup> )	kg	kPa(kgf/cm <sup>2</sup> )	kg	kPa(kgf/cm <sup>2</sup> )
Reinforced Triple grouser	600 mm	3.20 m	33 900	69 (0.70)	34 400	65 (0.66)	34 200	69 (0.70)	34 800	65 (0.66)

\*1 :Including 1.40 m³ (ISO heaped) bucket weight (1 150 kg) and counterweight (6 350kg).  
\*2 :Including 1.38 m³ (ISO heaped) rock bucket weight (1 330 kg) and counterweight (6 900kg).  
\*3 :Including 1.40 m³ (ISO heaped) reinforced bucket weight (1 360 kg) and counterweight (7 600kg).

WEIGHT: BASIC MACHINE and COMPONENTS				
		Excluding front-end attachment, fuel, hydraulic oil, coolant, etc., and including counterweight.		
	ZX330-5A		ZX330LC-5A	
Shoe width	Weight	Overall width	Weight	Overall width
600 mm	24 200 kg	3 190 mm	24 700 kg	3 190 mm
700 mm	24 800 kg	3 290 mm	25 300 kg	3 290 mm
800 mm	25 100 kg	3 390 mm	25 700 kg	3 390 mm

	ZX350H-5A		ZX350LCH-5A		ZX350K-5A		ZX350LCK-5A	
Shoe width	Weight	Overall width	Weight	Overall width	Weight	Overall width	Weight	Overall width
600 mm	25 600 kg	3 190 mm	26 100 kg	3 190 mm	26 100 kg	3 190 mm	26 700 kg	3 190 mm

Component weights			
	ZX330-5A / ZX330LC-5A	ZX350H-5A / ZX350LCH-5A	ZX350K-5A / ZX350LCK-5A
Counterweight	6 350 kg	6 900 kg	7 600 kg
Boom (with boom and arm cylinder)	3 630 kg	3 930 kg	3 800 kg
Arm 3.20 m (with bucket cylinder)	1 800 kg	2 020 kg	1 950 kg
Arm 2.67 m (with bucket cylinder)	1 640 kg	—	—
Arm 4.00 m (with bucket cylinder)	1 900 kg	—	—
Bucket 1.40 m³	1 150 kg	—	1 360 kg
Bucket 1.38 m³	—	1 330 kg	—



# SPECIFICATIONS

## BUCKET AND ARM DIGGING FORCES

Arm length	2.67 m	3.20 m	4.00 m
Bucket digging force* ISO	246 kN (25 100 kgf)	246 kN (25 100 kgf)	246 kN (25 100 kgf)
Bucket digging force* SAE	214 kN (21 800 kgf)	214 kN (21 800 kgf)	214 kN (21 800 kgf)
Arm crowd force* ISO	222 kN (22 600 kgf)	185 kN (18 900 kgf)	158 kN (16 200 kgf)
Arm crowd force* SAE	213 kN (21 700 kgf)	177 kN (18 100 kgf)	154 kN (15 700 kgf)

\* At power boost

## BACKHOE ATTACHMENTS

Boom and arms are of welded, box-section design. 6.40 m boom, and 2.67 m, 3.20 m and 4.00 m arms are available.  
Bucket is of welded steel structure. Side clearance adjust mechanism provided on the bucket joint bracket.

### Buckets

Capacity	Width		No. of teeth	Weight	Recommendation							
					ZX330-5A			ZX330LC-5A			ZX350H-5A ZX350LCH-5A	ZX350K-5A ZX350LCK-5A
	Without side cutters	With side cutters			Arm 2.67 m	Arm 3.20 m	Arm 4.00 m	Arm 2.67 m	Arm 3.20 m	Arm 4.00 m	H-arm 3.20 m	K-arm 3.20 m
ISO heaped												
1.15 m <sup>3</sup>	1 100 mm	1 230 mm	5	1 060 kg	⊙	⊙	⊙	⊙	⊙	⊙	—	⊙
1.40 m <sup>3</sup>	1 280 mm	1 410 mm	5	1 150 kg	⊙	⊙	○	⊙	⊙	⊙	—	⊙
1.62 m <sup>3</sup>	1 460 mm	1 590 mm	5	1 240 kg	○	○	—	○	○	□	—	○
1.86 m <sup>3</sup>	1 640 mm	—	5	1 200 kg	□	—	—	□	—	—	—	—
<sup>*1</sup> 1.40 m <sup>3</sup>	1 280 mm	1 410mm	5	1 110 kg	⊙	⊙	○	⊙	⊙	⊙	—	⊙
<sup>*2</sup> 1.40 m <sup>3</sup>	1 280 mm	1 410mm	5	1 130 kg	⊙	⊙	○	⊙	⊙	⊙	—	⊙
<sup>*3</sup> 1.40 m <sup>3</sup>	1 280 mm	1 410mm	5	1 360 kg	⊙	⊙	○	⊙	⊙	⊙	⊙	⊙
<sup>*1,3</sup> 1.40 m <sup>3</sup>	1 280 mm	1 410mm	5	1 320 kg	⊙	⊙	○	⊙	⊙	⊙	⊙	⊙
<sup>*3</sup> 1.62 m <sup>3</sup>	1 460 mm	1 590 mm	5	1 480 kg	○	○	—	○	○	□	○	—
<sup>*4</sup> 1.15 m <sup>3</sup>	—	1 200 mm	5	1 240 kg	●	●	—	●	●	—	●	—
<sup>*1,4</sup> 1.38 m <sup>3</sup>	—	1 360mm	5	1 330 kg	⊙	⊙	—	⊙	⊙	—	●	—
<sup>*2,4</sup> 1.38 m <sup>3</sup>	—	1 360mm	5	1 350 kg	⊙	⊙	—	⊙	⊙	—	●	—
<sup>*1,4</sup> 1.50 m <sup>3</sup>	—	1 470mm	5	1 400 kg	○	○	—	○	○	—	⊙	—
<sup>*2,4</sup> 1.50 m <sup>3</sup>	—	1 470mm	5	1 430 kg	○	○	—	○	○	—	⊙	—
<sup>*5</sup> 0.90 m <sup>3</sup>	1 010mm	—	3	1 470 kg	●	●	—	●	●	—	●	—
One-point ripper			1	850 kg	●	●	—	●	●	—	●	—

\*1 Super V teeth type bucket

\*2 Level-pin-type bucket

\*3 Reinforced bucket

\*4 Rock bucket

\*5 Ripper bucket

⊙ Suitable for materials with density of 2 000 kg/m<sup>3</sup> or less

○ Suitable for materials with density of 1 600 kg/m<sup>3</sup> or less

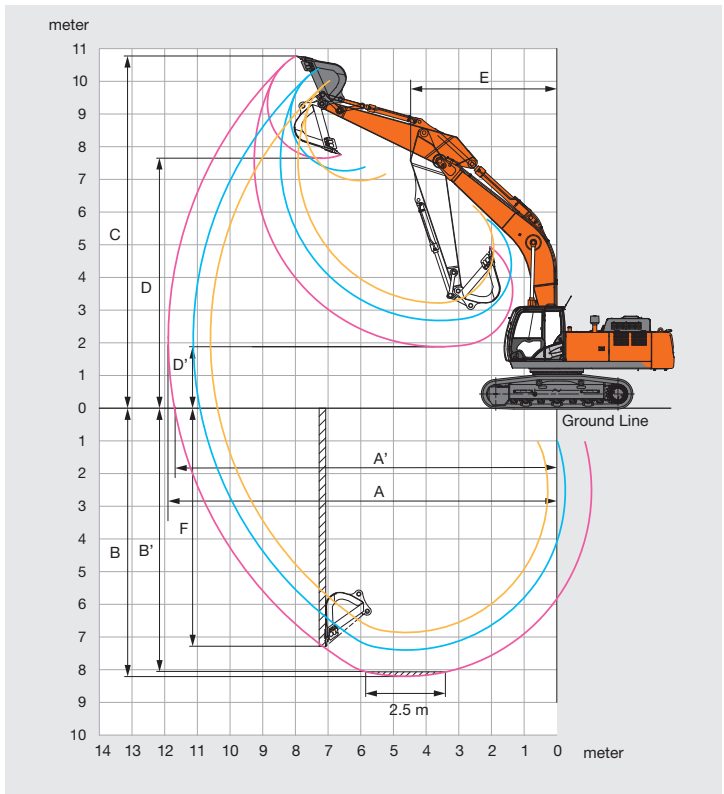
□ Suitable for materials with density of 1 100 kg/m<sup>3</sup> or less

● Heavy-duty service

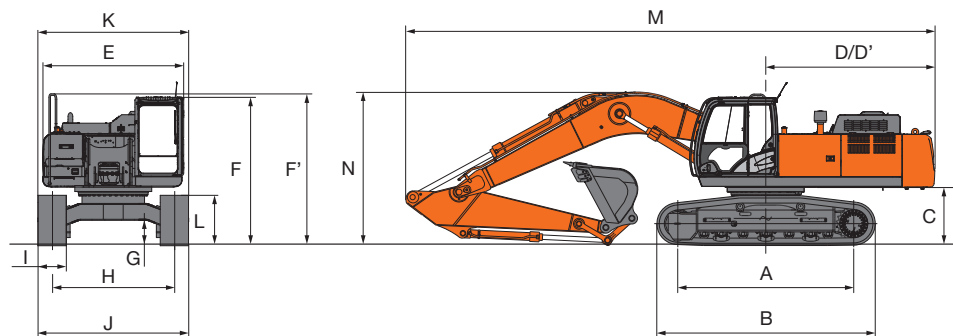
— Not applicable

## WORKING RANGES

Arm length	Unit: mm		
	2.67 m	3.20 m	4.00 m
A Max. digging reach	10 570	11 100	11 860
A' Max. digging reach (on ground)	10 360	10 890	11 670
B Max. digging depth	6 840	7 380	8 180
B' Max. digging depth for 2.5 m level	6 640	7 210	8 040
C Max. cutting height	9 990	10 360	10 750
D Max. dumping height	6 940	7 240	7 630
D' Min. dumping height	3 210	2 680	1 880
E Min. swing radius	4 610	4 460	4 470
F Max. vertical wall digging depth	5 510	6 420	7 270



## DIMENSIONS



	ZX330-5A	ZX330LC-5A	ZX350H-5A	ZX350LCH-5A	ZX350K-5A	ZX350LCK-5A
A Distance between tumbler	3 730	4 050	3 730	4 050	3 730	4 050
B Undercarriage length	4 650	4 950	4 650	4 950	4 650	4 950
C Counterweight clearance	1 160	1 160	1 160	1 160	1 160	1 160
D Rear-end swing radius	3 590	3 590	3 590	3 590	3 590	3 590
D' Rear-end length	3 590	3 590	3 590	3 590	3 590	3 590
E Overall width of upperstructure	2 990	2 990	2 990	2 990	2 990	2 990
F Overall height of cab	3 160	3 160	3 160	3 160	3 290	3 290
F' Overall height of upperstructure	3 220	3 220	3 220	3 220	3 290	3 290
G Min. ground clearance	500	500	500	500	500	500
H Track gauge	2 590	2 590	2 590	2 590	2 590	2 590
I Track shoe width	G 600	G 600	G 600	G 600	G 600	G 600
J Undercarriage width	3 190	3 190	3 190	3 190	3 190	3 190
K Overall width	3 190	3 190	3 190	3 190	3 190	3 190
L Track height with triple grouser shoes	1 060	1 060	1 070	1 070	1 070	1 070
M Overall length						
With arm 2.67 m	11 350	11 350	—	—	—	—
With arm 3.20 m	11 220	11 220	11 220	11 220	11 220	11 220
With arm 4.00 m	11 310	11 310	—	—	—	—
N Overall height of boom						
With arm 2.67 m	3 470	3 470	—	—	—	—
With arm 3.20 m	3 270	3 270	3 270	3 270	3 270	3 270
With arm 4.00 m	3 600	3 600	—	—	—	—

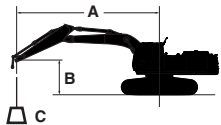
G: Triple grouser shoes













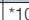

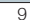

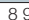

LIFTING CAPACITIES (Without Bucket)





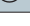
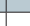
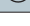

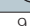




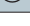

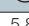
- Notes: 1. Ratings are based on ISO 10567.  
2. Lifting capacity does not exceed 75% of tipping load with the machine on firm, level ground or 87% full hydraulic capacity.  
3. The load point is the center-line of the bucket pivot mounting pin on the arm.  
4. \*Indicates load limited by hydraulic capacity.  
5. 0 m = Ground.














For lifting capacities, subtract bucket and quick hitch weight from lifting capacities without bucket.


















A: Load radius  
B: Load point height  
C: Lifting capacity

ZX330-5A										 Rating over-front	 Rating over-side or 360 degrees	Unit : kg				
Conditions	Load point height m	Load radius m												At max. reach		
		1.5		3.0		4.5		6.0		7.5		9.0				
																meter
Boom 6.40 m	6.0							*10 480	9 160	8 940	6 400			8 010	5 720	8.00
Arm 2.67 m	4.5					*15 100	13 430	*11 840	8 710	8 740	6 210			7 040	5 000	8.58
Counterweight 6 350 kg	3.0					*18 620	12 220	11 860	8 190	8 470	5 960			6 560	4 630	8.87
Shoe 600 mm	1.5							11 390	7 760	8 220	5 730			6 420	4 510	8.89
	0 (Ground)					17 640	11 310	11 130	7 530	8 060	5 580			6 610	4 620	8.65
	-1.5			*13 900	*13 900	17 670	11 340	11 060	7 470	8 020	5 540			7 200	5 010	8.13
	-3.0			*22 630	*22 630	*17 540	11 530	11 180	7 580					8 530	5 920	7.26
	-4.5					*17 270								*10 150	8 150	5.88
Boom 6.40 m	6.0									9 050	6 490			*6 310	5 140	8.58
Arm 3.20 m	4.5							*11 070	8 860	8 820	6 280	6 560	4 660	*6 340	4 550	9.12
Counterweight 6 350 kg	3.0					*17 360	12 590	12 010	8 320	8 520	6 000	6 440	4 540	6 010	4 240	9.39
Shoe 600 mm	1.5					18 110	11 700	11 490	7 840	8 240	5 750	6 300	4 410	5 890	4 130	9.42
	0 (Ground)					17 670	11 330	11 150	7 540	8 040	5 560	6 210	4 330	6 030	4 210	9.19
	-1.5			*13 330	*13 330	17 590	11 260	11 020	7 420	7 950	5 480			6 490	4 510	8.70
	-3.0	*15 640	*15 640	*21 080	*21 080	17 740	11 390	11 070	7 470	8 020	5 540			7 490	5 200	7.90
	-4.5			*20 310	*20 310	*15 390	11 710	11 330	7 710					9 760	6 730	6.66
Boom 6.40 m	7.5													*5 040	*5 040	8.63
Arm 4.00 m	6.0									*8 050	6 630	6 750	4 830	*4 890	4 430	9.41
Counterweight 6 350 kg	4.5									*8 810	6 390	6 640	4 730	*4 890	3 980	9.91
Shoe 600 mm	3.0					*15 280	13 100	*11 640	8 510	8 620	6 080	6 470	4 570	*5 040	3 720	10.16
	1.5					*18 470	11 990	11 620	7 950	8 280	5 770	6 290	4 400	5 200	3 630	10.18
	0 (Ground)			*8 070	*8 070	17 720	11 350	11 170	7 550	8 020	5 530	6 140	4 260	5 290	3 670	9.97
	-1.5	*8 120	*8 120	*12 230	*12 230	17 440	11 120	10 930	7 330	7 860	5 380	6 070	4 190	5 620	3 890	9.53
	-3.0	*12 720	*12 720	*17 660	17 660	17 460	11 130	10 880	7 290	7 830	5 360			6 300	4 360	8.80
	-4.5	*18 220	*18 220	*24 010	22 910	*17 280	11 350	11 020	7 410	7 990	5 500			7 710	5 320	7.71
	-6.0			*17 400	*17 400	*12 900	11 820	*9 060	7 820					*8 880	7 720	6.06

ZX330LC-5A										 Rating over-front	 Rating over-side or 360 degrees	Unit : kg				
Conditions	Load point height m	Load radius m												At max. reach		
		1.5		3.0		4.5		6.0		7.5		9.0				
																meter
Boom 6.40 m Arm 2.67 m Counterweight 6 350 kg Shoe 600 mm	6.0							*10 480	9 300	*9 750	6 500			9 040	5 820	8.00
	4.5					*15 100	13 630	*11 840	8 850	9 880	6 310			7 950	5 090	8.58
	3.0					*18 620	12 420	*13 440	8 320	9 600	6 060			7 420	4 710	8.87
	1.5							13 070	7 900	9 340	5 830			7 280	4 590	8.89
	0 (Ground)					*20 300	11 520	12 800	7 670	9 180	5 680			7 500	4 700	8.65
	-1.5			*13 900	*13 900	*19 630	11 550	12 730	7 610	9 140	5 650			8 180	5 110	8.13
	-3.0			*22 630	*22 630	*17 540	11 740	12 850	7 710					9 720	6 020	7.26
-4.5													*10 150	8 300	5.88	
Boom 6.40 m Arm 3.20 m Counterweight 6 350 kg Shoe 600 mm	6.0									*9 060	6 600			*6 310	5 230	8.58
	4.5							*11 070	9 000	*9 720	6 380	7 410	4 740	*6 340	4 630	9.12
	3.0					*17 360	12 790	*12 790	8 450	9 660	6 110	7 280	4 630	*6 560	4 320	9.39
	1.5					*19 930	11 910	13 170	7 980	9 370	5 850	7 140	4 500	6 680	4 210	9.42
	0 (Ground)					*20 710	11 530	12 830	7 680	9 170	5 660	7 050	4 410	6 840	4 290	9.19
	-1.5			*13 330	*13 330	*20 180	11 470	12 690	7 560	9 080	5 580			7 370	4 600	8.70
	-3.0	*15 640	*15 640	*21 080	*21 080	*18 540	11 590	12 740	7 600	9 140	5 640			8 520	5 300	7.90
-4.5			*20 310	*20 310	*15 390	11 920	*11 600	7 840					*9 870	6 850	6.66	
Boom 6.40 m Arm 4.00 m Counterweight 6 350 kg Shoe 600 mm	7.5													*5 040	*5 040	8.63
	6.0									*8 050	6 740	*6 810	4 920	*4 890	4 510	9.41
	4.5									*8 810	6 490	7 490	4 810	*4 890	4 050	9.91
	3.0					*15 280	13 310	*11 640	8 650	9 760	6 180	7 320	4 650	*5 040	3 800	10.16
	1.5					*18 520	12 190	13 320	8 090	9 420	5 880	7 130	4 480	*5 330	3 700	10.18
	0 (Ground)			*8 070	*8 070	*20 230	11 560	12 850	7 680	9 140	5 630	6 990	4 350	*5 810	3 750	9.97
	-1.5	*8 120	*8 120	*12 230	*12 230	*20 480	11 320	12 600	7 470	8 980	5 490	6 910	4 280	6 390	3 970	9.53
	-3.0	*12 720	*12 720	*17 660	*17 660	*19 530	11 340	12 550	7 430	8 960	5 460			7 170	4 450	8.80
	-4.5	*18 220	*18 220	*24 010	23 310	*17 280	11 550	12 700	7 550	9 110	5 610			8 790	5 420	7.71
	-6.0			*17 400	*17 400	*12 900	12 020	*9 060	7 954					*8 880	7 850	6.06

ZX350H-5A										 Rating over-front	 Rating over-side or 360 degrees	Unit : kg				
Conditions	Load point height m	Load radius m												At max. reach		
		1.5		3.0		4.5		6.0		7.5		9.0				
																meter
H-Boom 6.40 m	6.0									*8 890	6 860			*6 270	5 410	8.58
Arm 3.20 m	4.5							*10 870	9 370	9 300	6 630	6 900	4 900	*6 290	4 780	9.12
Counterweight 6 900 kg	3.0					*17 040	13 290	*12 540	8 770	8 980	6 330	6 770	4 770	6 320	4 450	9.39
Shoe 600 mm	1.5					19 060	12 320	12 090	8 250	8 670	6 040	6 620	4 640	6 180	4 330	9.42
	0 (Ground)					18 580	11 910	11 720	7 930	8 450	5 840	6 520	4 540	6 330	4 410	9.19
	-1.5			*13 280	*13 280	18 500	11 840	11 580	7 800	8 350	5 750			6 810	4 740	8.70
	-3.0	*15 590	*15 590	*21 040	*21 040	*18 130	11 980	11 630	7 850	8 420	5 820			7 870	5 460	7.90
	-4.5			*19 790	*19 790	*15 010	12 340	*11 300	8 110					*9 600	7 090	6.66

ZX350LCH-5A										 Rating over-front	 Rating over-side or 360 degrees	Unit : kg				
Conditions	Load point height m	Load radius m												At max. reach		
		1.5		3.0		4.5		6.0		7.5		9.0				
																meter
H-Boom 6.40 m	6.0									*8 890	6 980			*6 270	5 510	8.58
H-Arm 3.20 m	4.5							*10 870	9 530	*9 520	6 740	*7 420	4 990	*6 290	4 870	9.12
Counterweight	3.0					*17 040	13 520	*12 540	8 930	10 190	6 440	7 670	4 870	*6 510	4 540	9.39
6 900 kg	1.5					*19 540	12 550	13 890	8 410	9 880	6 160	7 520	4 730	*6 960	4 420	9.42
Shoe 600 mm	0 (Ground)					*20 290	12 140	13 510	8 080	9 650	5 950	7 410	4 630	7 200	4 500	9.19
	-1.5			*13 280	*13 280	*19 760	12 070	13 360	7 950	9 550	5 870			7 760	4 840	8.70
	-3.0	*15 590	*15 590	*21 040	*21 040	*18 130	12 210	13 410	8 000	9 620	5 930			8 970	5 570	7.90
	-4.5			*19 790	*19 790	*15 010	12 570	*11 300	8 260					*9 600	7 220	6.66



Standard and optional equipment may vary by country, so please consult your Hitachi dealer for details.

● : Standard equipment                      ○ : Optional equipment

	ZX330-5A/ ZX330LC-5A	ZX350H-5A/ ZX350LCH-5A	ZX350K-5A/ ZX350LCK-5A
<b>ENGINE</b>			
Air cleaner double filters	●	●	●
Alternator 50 A	●	●	●
Auto idle system	●	●	●
Auto shut-down control	●	●	●
Cartridge-type engine oil filter	●	●	●
Cartridge-type fuel main filter	●	●	●
Cartridge-type fuel pre-filter with water separator	●	●	●
Dry-type air filter with evacuator valve (with air filter restriction indicator)	●	●	●
Dust-proof indoor net	●	●	●
ECO/PWR mode control	●	●	●
Engine oil drain coupler	●	●	●
Engine warm-up device	●	●	●
Fan guard	●	●	●
Fuel cooler	●	●	●
Maintenance free pre-cleaner	○	○	○
Radiator expansion tank	●	●	●

<b>HYDRAULIC SYSTEM</b>			
Auto power lift	●	●	●
Control valve with main relief valve	●	●	●
Full flow filter	●	●	—
High mesh full flow filter with restriction indicator	○	○	●
One extra port for control valve	●	●	●
Pilot filter	●	●	●
Power boost	●	●	●
Suction filter	●	●	●
Work mode selector	●	●	●

	ZX330-5A/ ZX330LC-5A	ZX350H-5A/ ZX350LCH-5A	ZX350K-5A/ ZX350LCK-5A
<b>CAB</b>			
All-weather sound suppressed steel cab	●	●	●
AM-FM radio with 2 speakers	●	●	●
Ashtray	●	●	●
Auto control air conditioner	●	●	●
AUX. terminal and storage	○	○	○
Cab (Center pillar reinforced structure)	●	●	●
Cigarette lighter 24V	●	●	●
Drink holder	●	●	●
Drink holder with hot & cool	●	●	●
Electric double horn	●	●	●
Engine shut-off switch	●	●	●
Evacuation hammer	●	●	●
Floor mat	●	●	●
Footrest	●	●	●
Front window washer	●	●	●
Front windows on upper, lower and left side can be opened	●	●	●
Glove compartment	●	●	●
Hot & cool box	●	●	●
Intermittent windshield wipers	●	●	●
K-cab (with overhead window and guard)	—	—	●
Key cylinder light	●	●	●
LED room light with door courtesy	●	●	●
Lower cab front guard	○	●	●
OPG top guard Level I (ISO10262) compliant cab	●	●	●
Pilot control shut-off lever	●	●	●
Rain guard	○	○	○
Rear tray	●	●	●
Retractable seat belt	●	●	●
ROPS (ISO 12117-2) compliant cab	○	○	○
Rubber radio antenna	●	●	●
Seat : air suspension seat with heater	○	○	○
Seat : fablic seat	●	●	●
Seat : mechanical suspension seat	○	○	○
Seat adjustment part : backrest, armrest, height and angle, slide forward / back	●	●	●
Short wrist control levers (Bold type)	○	○	○
Short wrist control levers (Slim type)	●	●	●
Twin wipper	—	—	●
Upper cab front guard	○	○	○
4 fluid-filled elastic mounts	●	●	
12 V power souce	○	○	○

	ZX330-5A/ ZX330LC-5A	ZX350H-5A/ ZX350LCH-5A	ZX350K-5A/ ZX350LCK-5A
<b>MONITOR SYSTEM</b>			
Alarms: overheat, engine warning, engine oil pressure, alternator, minimum fuel level, hydraulic filter restriction, air filter restriction, work mode, overload, etc	●	●	●
Alarm buzzers: overheat, engine oil pressure, overload	●	●	●
Display of meters: water temperature, hour, fuel rate, clock	●	●	●
Other displays: work mode, auto-idle, glow, rearview monitor, operating conditions, etc	●	●	●
32 languages selection	●	●	●

<b>LIGHTS</b>			
Additional boom light with cover	○	○	○
Additional cab roof front lights	○	○	○
Rear light	○	○	○
2 working lights	●	●	●

<b>UPPER STRUCTURE</b>			
Batteries 2 x 128 Ah	●	●	●
Counterweight 6 350 kg	●	—	—
Counterweight 6 900 kg	—	●	—
Counter weight 7 600 kg	—	—	●
Electric fuel refilling pump	○	○	○
Fuel level float	●	●	●
Hydraulic oil level gauge	●	●	●
Lockable fuel refilling cap	●	●	●
Lockable machine covers	●	●	●
Rear view camera	●	●	●
Rear view mirror (right & left side)	●	●	●
Swing parking brake	●	●	●
Tool box	●	●	●
Undercover	●	—	●
Undercover 6.0 mm reinforced	○	●	●
Utility space	●	●	●

<b>UNDERCARRIAGE</b>			
Bolt-on sprocket	●	●	●
Full track guards	○	○	○
Reinforced idler bracket	—	●	●
Reinforced lower flange	—	●	●
Reinforced side step	●	●	●
Reinforced track links with pin seals	●	●	●
Shoe: 600 mm triple grouser	●	● Reinforced	● Reinforced
Track undercover 9.0 mm reinforced	—	○	●
Travel direction mark on track frame	●	●	●
Travel motor covers	●	●	●
Travel parking brake	●	●	●
Upper and lower rollers	●	●	●
3 track guards (each side)	●	●	●
4 tie down brackets	●	●	●

	ZX330-5A/ ZX330LC-5A	ZX350H-5A/ ZX350LCH-5A	ZX350K-5A/ ZX350LCK-5A
<b>FRONT ATTACHMENTS</b>			
Arm 2.67 m	○	—	—
Arm 3.20 m	●	● H-arm	● K-arm
Arm 4.00 m	○	—	—
Boom 6.40 m	●	● H-boom	● Boom
Bucket 1.40 m³ (ISO heaped)	●	—	○
Bucket 1.40 m³ reinfoced (ISO heaped)	○	○	●
Bucket 1.38 m³ rock (ISO heaped)	○	●	—
Casted bucket link A	●	●	●
Centralized lubrication system	●	●	●
Dirt seal on all bucket pins	●	●	●
Flanged pin	●	●	●
HN bushing	●	●	●
Reinforced link B	—	●	● for demolition
Reinforced resin thrust plate	●	●	●
WC (tungsten-carbide) thermal spraying	●	●	●

<b>ATTACHMENTS</b>			
Additional pump	○	○	○
Assist piping	○	○	○
Attachment basic piping	○	○	●
Breaker and crusher piping	○	○	●
Line filter	○	○	○
Parts for breaker and crusher	○	○	●
Pilot accumulator	○	○	●
2 pump combined flow for attachment basic piping	○	○	●

<b>MISCELLANEOUS</b>			
Electric grease gun	○	○	○
Global e-service	●	●	●
Onboard information controller	●	●	●
Skid-resistant plates and handrails	●	●	●
Standard tool kit	●	●	●
Swing motion alarm device with lumps	○	○	○
Travel motion alarm device	○	○	○





**Built on the foundation of superb technological capabilities, Hitachi Construction Machinery is committed to providing leading-edge solutions and services to contribute as a reliable partner to the business of customers worldwide.**

## Hitachi Environmental Vision 2050

Our Environmental Vision envisions a low-carbon society; a resource efficient society; a harmonized society with nature. To achieve such a sustainable society, we have established a set of long-term environmental targets called Hitachi Environmental Innovation 2050.

### Reducing Environmental Impact by New ZAXIS

Hitachi makes a green way to cut carbon emissions for global warming prevention according to LCA\*. New ZAXIS utilizes lots of technological advances, including the new ECO mode, and Isochronous Control. Hitachi has long been committed to recycling of components, such as aluminum parts in radiators and oil cooler. Resin parts are marked for recycling.

\*Life Cycle Assessment – ISO 14040

Before using a machine with a satellite or tele-communication system, please make sure that the satellite or tele-communication system complies with local regulations, safety standards and legal requirements. If not so, please make modifications accordingly.

These specifications are subject to change without notice.

Illustrations and photos show the standard models, and may or may not include optional equipment, accessories, and all standard equipment with some differences in color and features.

Before using, please read and understand the Operator's Manual for proper operation.